



Public Hearing Trustee Area Map Options

October 15, 2025

Jonathan Salt, *F3 Law*
David Lopez, *WSSC*

What is the California Voting Rights Act (“CVRA”)?



- Took effect January 1, 2003
- Prohibits the use of “at-large” elections when such an election system:

“impairs the ability of a protected class to elect candidates of its choice or its ability to influence the outcome of an election....”

(Elections Code §14027.)

What is a “protected class?”



- A class of voters who are members of a ***race, color, or language minority group***, as this class is referenced and defined in the federal Voting Rights Act of 1965 (52 U.S.C. Sec. 10301 et seq.).

(Elections Code §14026(d).)

What is a “By-Trustee Area” Election System

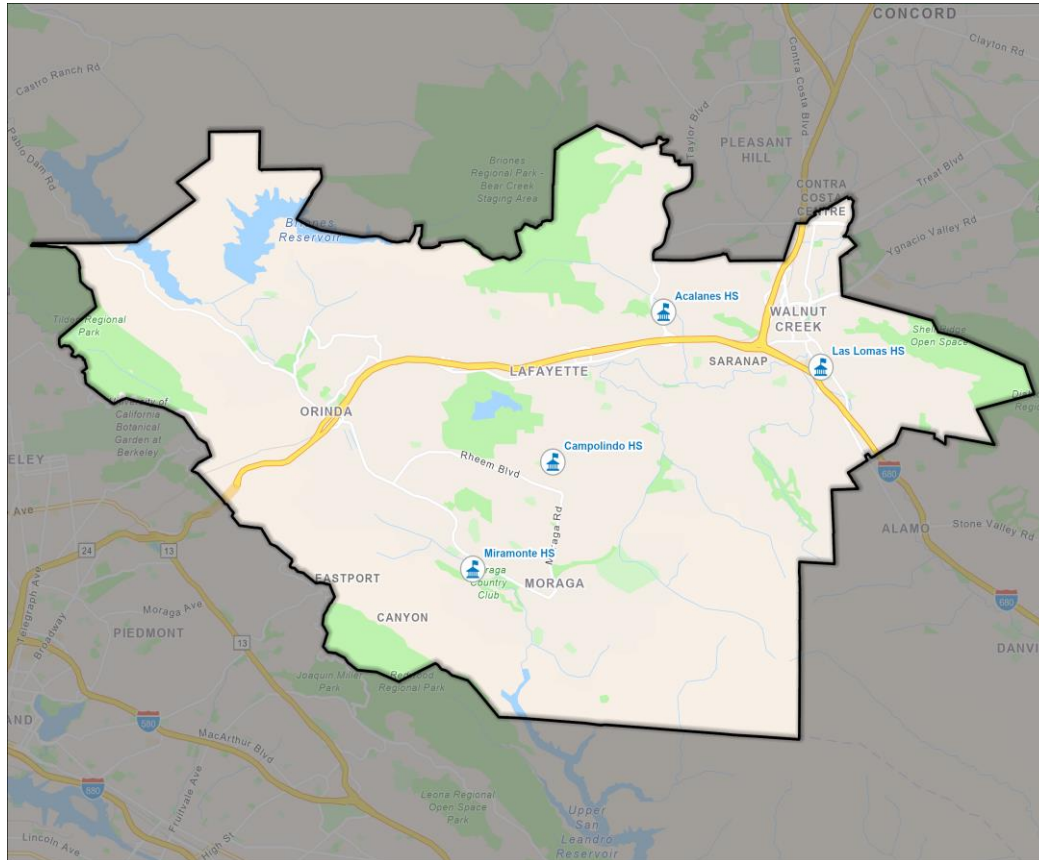
- *Only safe harbor from a CVRA claim*
- School district is divided into trustee areas
- A governing board member is elected from each trustee area
- Board members are elected ***by only the registered voters in the particular trustee area*** where the governing board member resides

Keep in mind...

- With a total population of **119,039**, each Trustee Area will **include *approximately 23,808 people***.
- The difference between the largest and smallest trustee areas can be no more than 2,380 people.
- Census Blocks vary significantly in shape, size, and population totals – approximately 1,100 Census blocks in the District.
- Census Blocks generally are not to be “split” with a Trustee Area boundary line – since we would lose the accuracy of the population balancing count.

District's Demographics

2020 Census Data (Total Population)

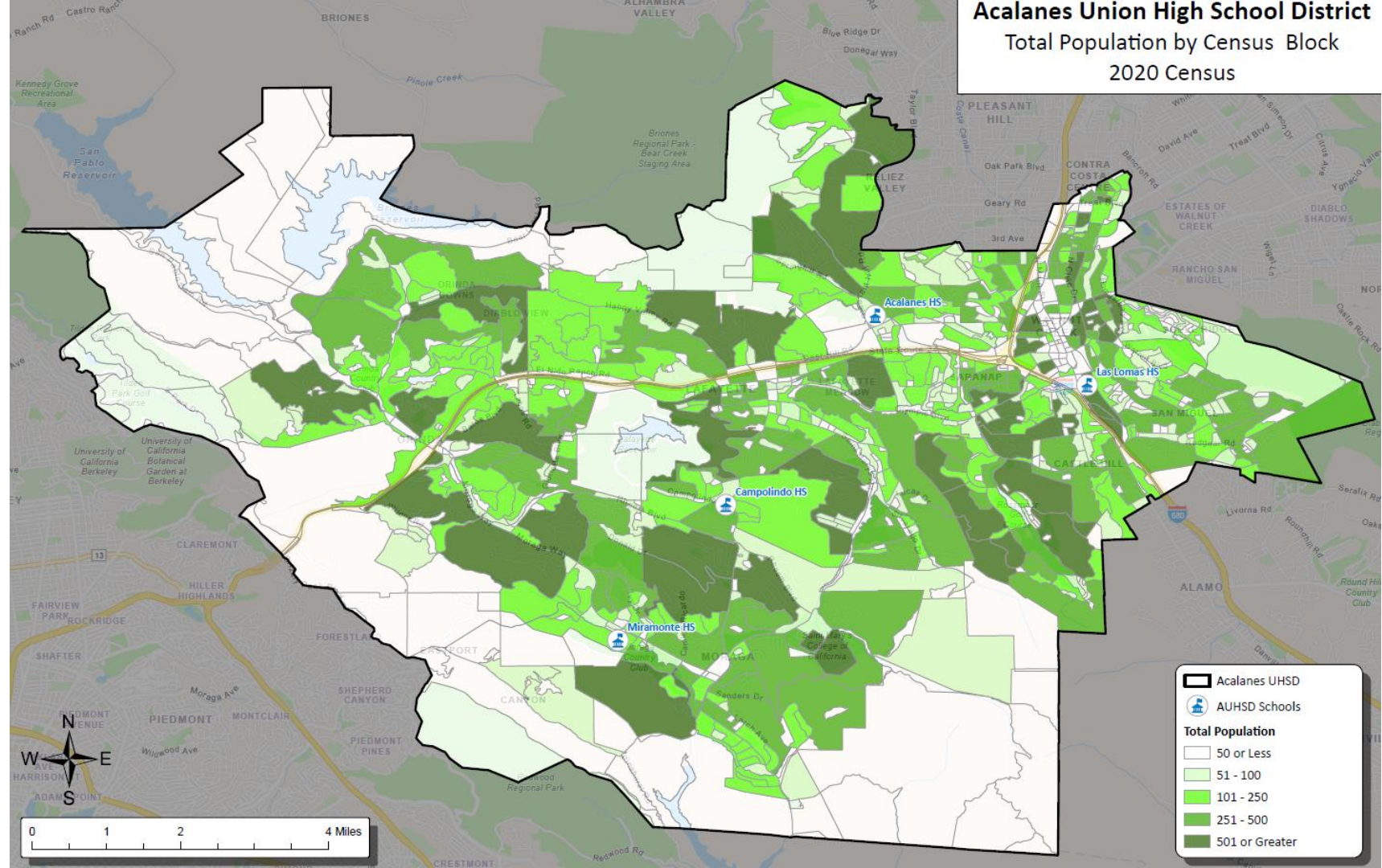


Population	Total Population		Age 18 +	
	Total	%	Total	%
Hispanic/Latino	10,870	9.1%	7,814	8.2%
White	79,149	66.5%	66,087	69.4%
Black/ African American	1,872	1.6%	1,549	1.6%
American Indian/Alaska Native	116	0.1%	100	0.1%
Asian	18,211	15.3%	14,665	15.4%
Native Hawaiian/ Pacific Islander	169	0.1%	148	0.2%
Other	740	0.6%	542	0.6%
Two or More Races	7,912	6.6%	4,313	4.5%
Total Population	119,039	100%	95,218	100%

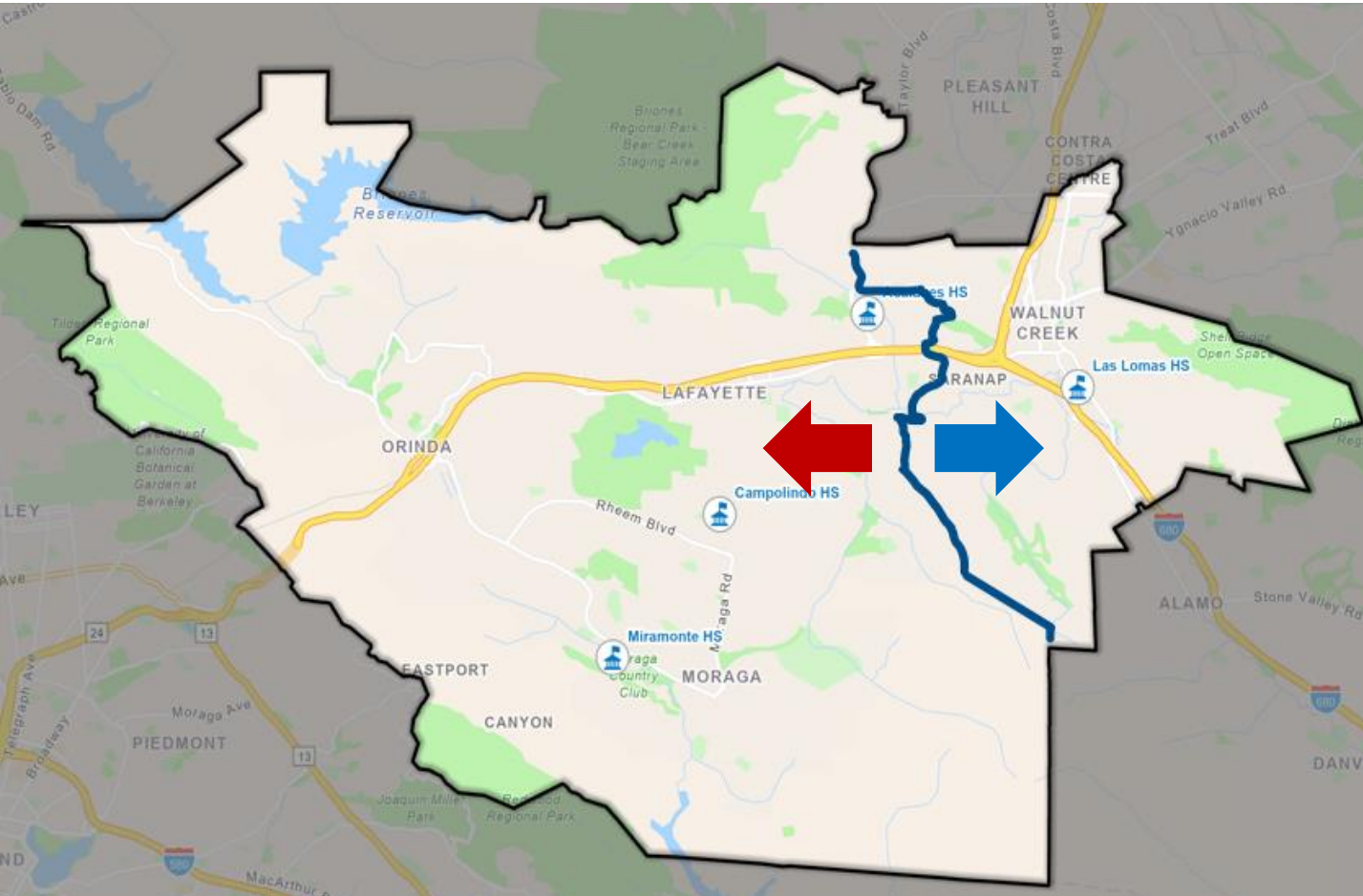
Acalanes Union High School District

Total Population by Census Block

2020 Census



Population Density (East/West)



East of the Blue Line

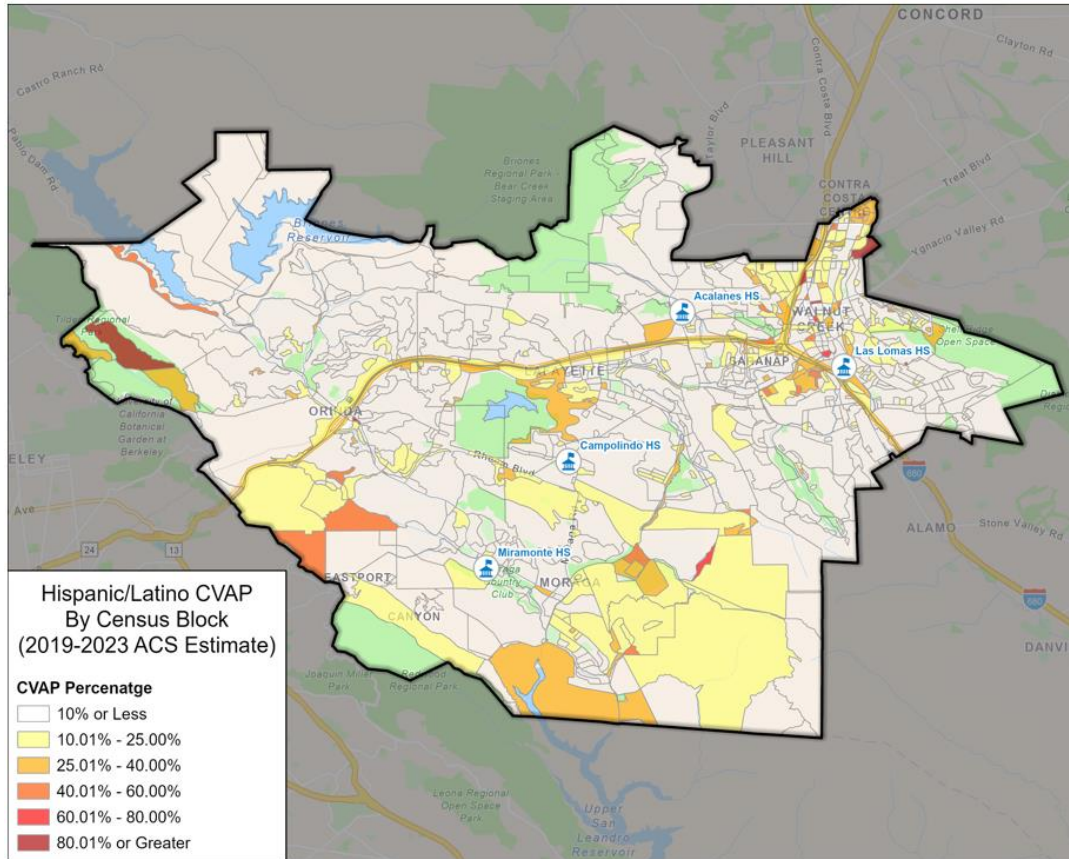
~55,200 people
2 1/3 Trustee Areas

West of the Blue Line

~63,800 people
2 2/3 Trustee Areas

District's Demographics

Hispanic Citizen Voting Age Population Estimates

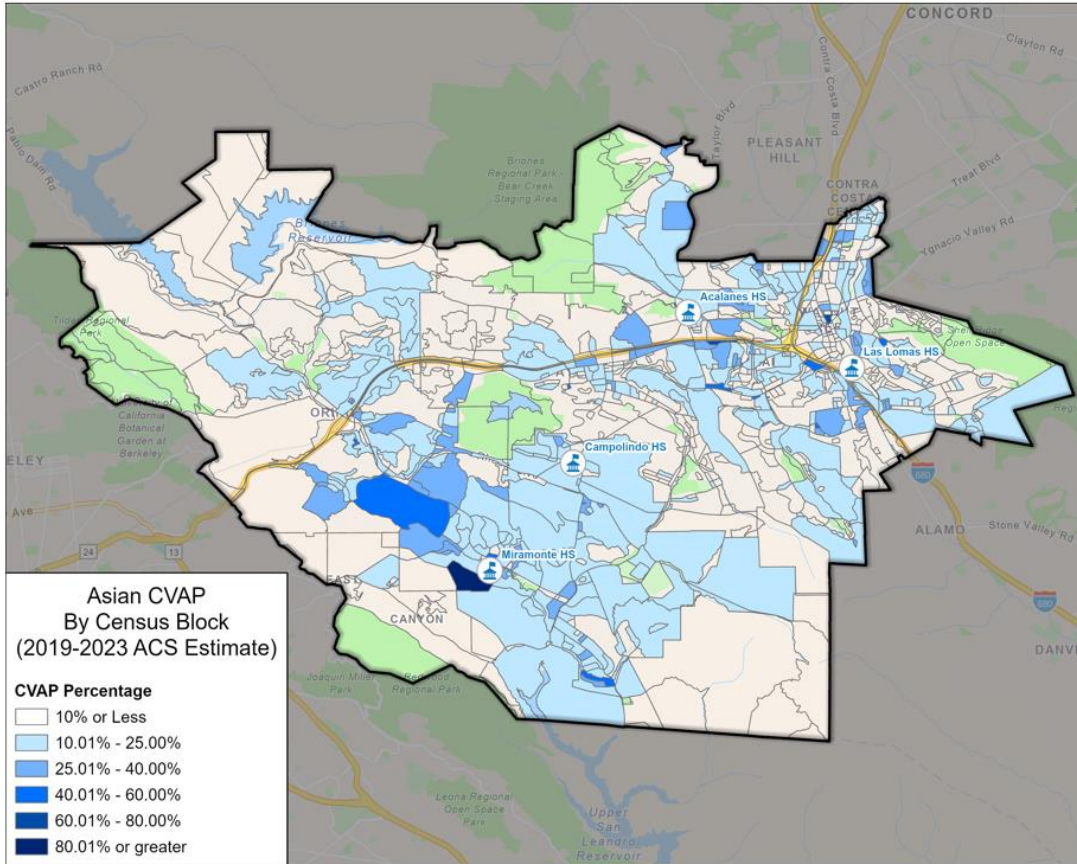


Population	2019-2023 ^[1]	
	Total	%
Hispanic/Latino	7,258	8.3%
White	64,173	73.3%
Black/ African American	1,545	1.8%
American Indian/Alaska Native	146	0.2%
Asian	11,155	12.7%
Native Hawaiian/ Pacific Islander	75	0.1%
Two or More Races	3,219	3.7%
Total Population	87,571	100%

^[1] CVAP data taken from the California Statewide Database which provides the 2019-2023 American Community Survey CVAP estimates with DOJ by 2020 Census blocks and adjustment to reallocate incarcerated persons to their last known residential address.

District's Demographics

Asian Citizen Voting Age Population Estimates

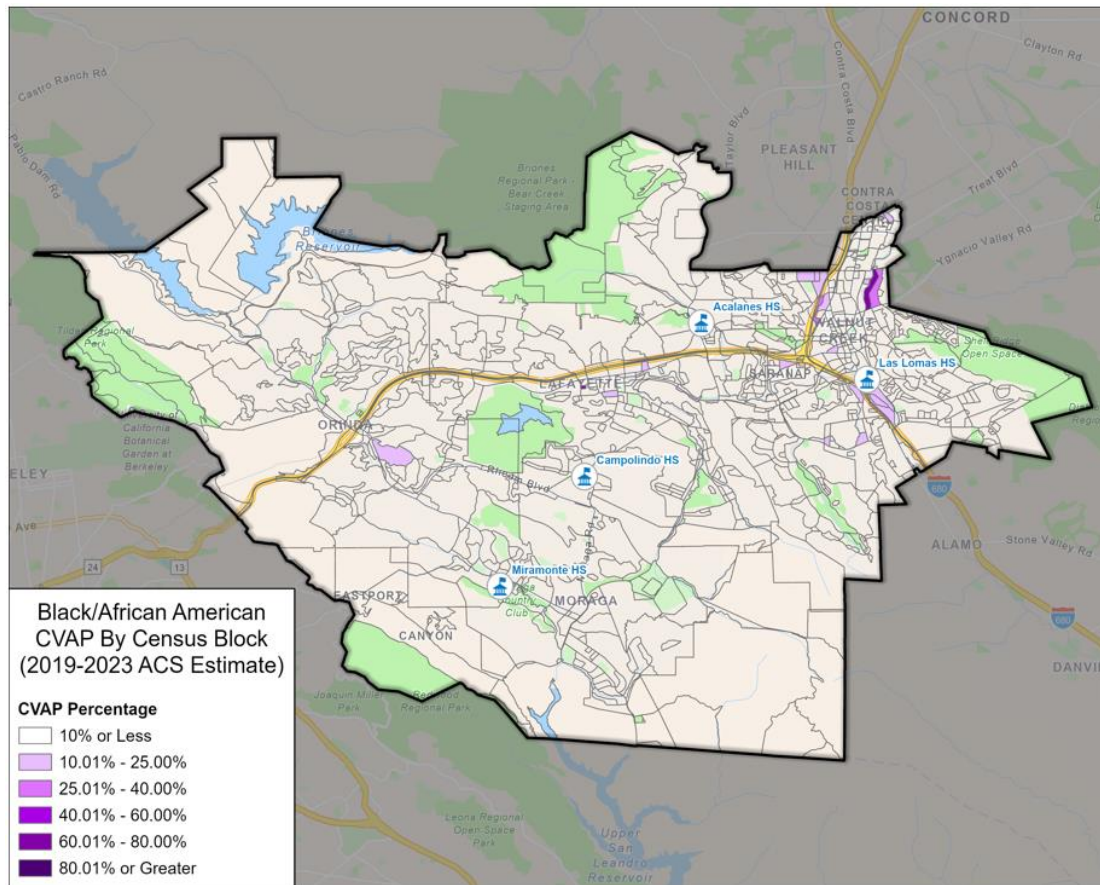


Population	2019-2023 ^[1]	
	Total	%
Hispanic/Latino	7,258	8.3%
White	64,173	73.3%
Black/ African American	1,545	1.8%
American Indian/Alaska Native	146	0.2%
Asian	11,155	12.7%
Native Hawaiian/ Pacific Islander	75	0.1%
Two or More Races	3,219	3.7%
Total Population	87,571	100%

^[1] CVAP data taken from the California Statewide Database which provides the 2019-2023 American Community Survey CVAP estimates with DOJ by 2020 Census blocks and adjustment to reallocate incarcerated persons to their last known residential address.

District's Demographics

Black Citizen Voting Age Population Estimates



Population	2019-2023 ^[1]	
	Total	%
Hispanic/Latino	7,258	8.3%
White	64,173	73.3%
Black/ African American	1,545	1.8%
American Indian/Alaska Native	146	0.2%
Asian	11,155	12.7%
Native Hawaiian/ Pacific Islander	75	0.1%
Two or More Races	3,219	3.7%
Total Population	87,571	100%

^[1] CVAP data taken from the California Statewide Database which provides the 2019-2023 American Community Survey CVAP estimates with DOJ by 2020 Census blocks and adjustment to reallocate incarcerated persons to their last known residential address.

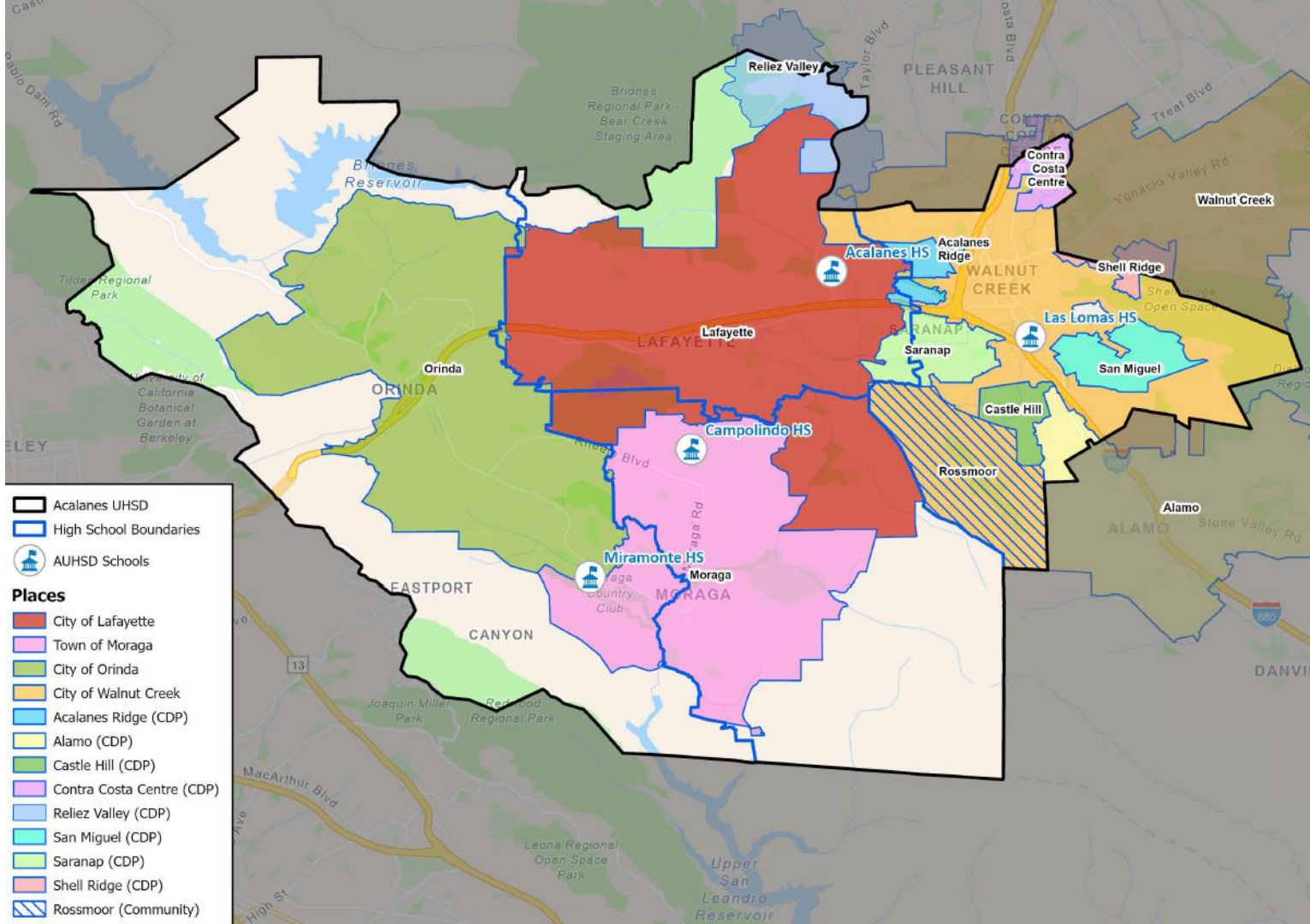
The map displays the Alacranes UHSD area, which includes the following places and school districts:

- Places:**
 - City of Lafayette (Red)
 - Town of Moraga (Pink)
 - City of Orinda (Green)
 - City of Walnut Creek (Orange)
 - Acalanes Ridge (CDP) (Light Blue)
 - Alamo (CDP) (Yellow)
 - Castle Hill (CDP) (Light Green)
 - Contra Costa Centre (CDP) (Purple)
 - Reliez Valley (CDP) (Light Blue)
 - San Miguel (CDP) (Cyan)
 - Saranap (CDP) (Light Green)
 - Shell Ridge (CDP) (Pink)
 - Rossmoor (Community) (Hatched)
- School Districts:**
 - Acalanes HS
 - Lafayette
 - Campolindo HS
 - Miramonte HS
 - Las Lomas HS

The map also shows major roads like Highway 13, Highway 680, and Highway 880, and various parks and reservoirs such as Briones Regional Park, Tilden Regional Park, and Leona Regional Open Space Park.



Cities, CDPs, & HS Areas



Legend:

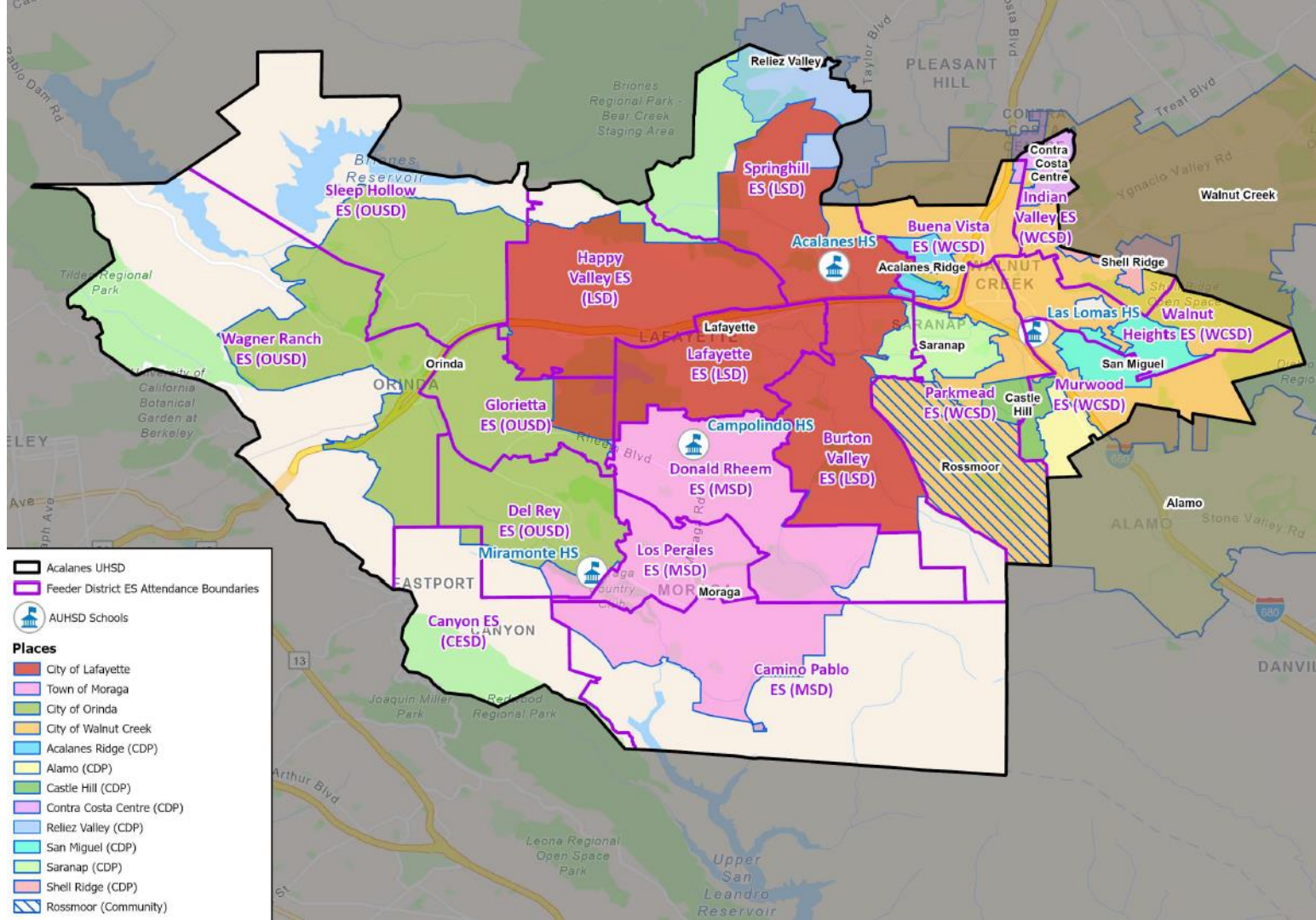
- Acalanes UHSD
- Feeder District ES Attendance Boundaries
- AUHSD Schools

Places:

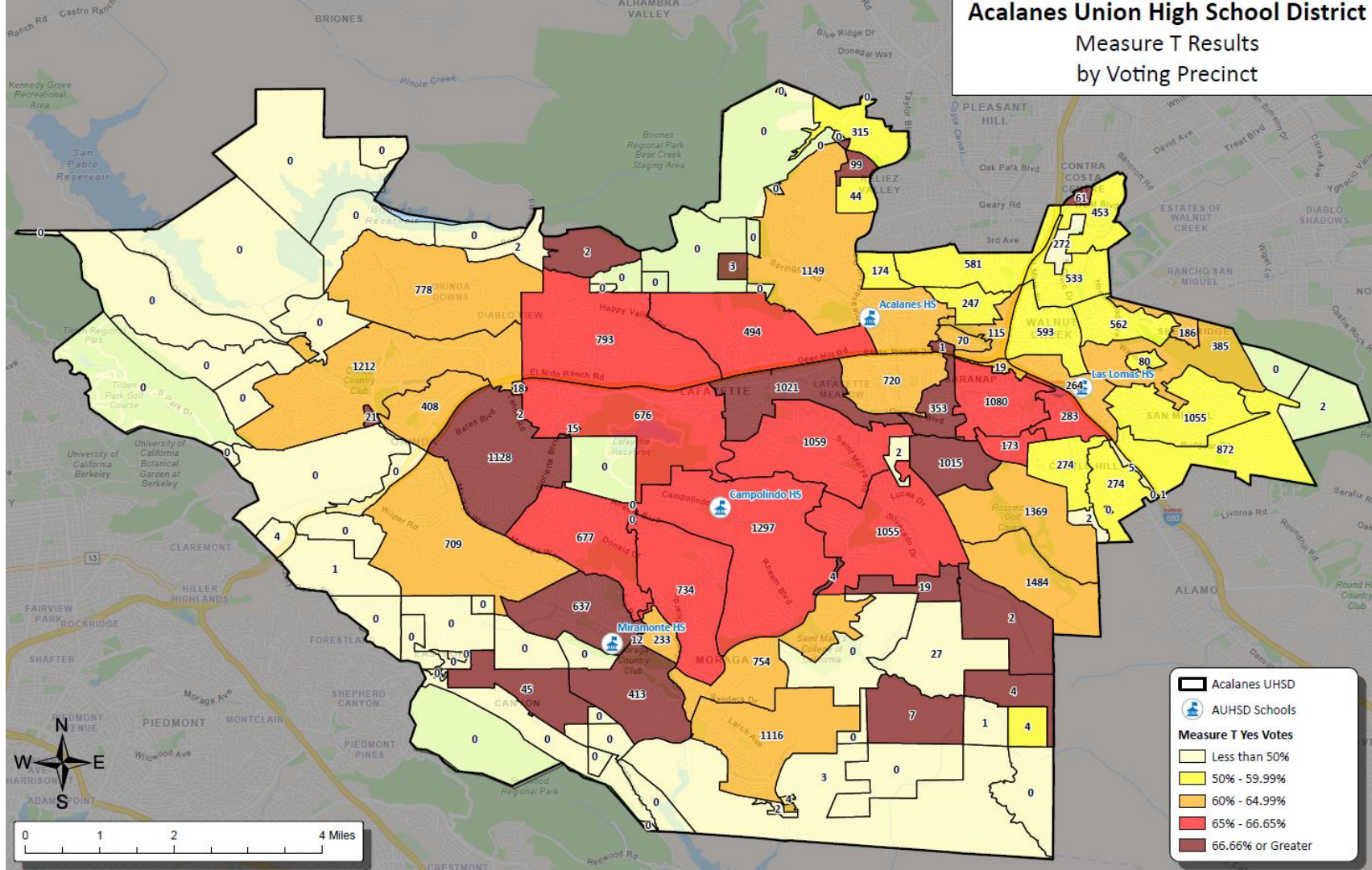
- City of Lafayette
- Town of Moraga
- City of Orinda
- City of Walnut Creek
- Acalanes Ridge (CDP)
- Alamo (CDP)
- Castle Hill (CDP)
- Contra Costa Centre (CDP)
- Reliez Valley (CDP)
- San Miguel (CDP)
- Saranap (CDP)
- Shell Ridge (CDP)
- Rossmoor (Community)

Feeder Districts and Schools:

- Springhill ES (LSD)**
- Happy Valley ES (LSD)**
- Lafayette ES (LSD)**
- Burton Valley ES (LSD)**
- Camino Pablo ES (MSD)**
- Los Perales ES (MSD)**
- Donald Rheem ES (MSD)**
- Campolindo HS**
- Miramonte HS**
- Del Rey ES (OUSD)**
- Glorietta ES (OUSD)**
- Wagner Ranch ES (OUSD)**
- Sleep Hollow ES (OUSD)**
- Indian Valley ES (WCSD)**
- Buena Vista ES (WCSD)**
- Las Lomas HS**
- Murwood ES (WCSD)**
- Parkmead ES (WCSD)**
- Walnut Heights ES (WCSD)**
- Shell Ridge**
- Alamo**
- Rossmoor**
- Castle Hill**
- Saranap**
- Acalanes Ridge**
- Reliez Valley**
- Contra Costa Centre**
- Walnut Creek**
- San Miguel**
- Alamo**
- Danville**
- Orinda**
- Eastport**
- Canyon**
- Reliez Valley**
- Springhill**
- Happy Valley**
- Lafayette**
- Burton Valley**
- Camino Pablo**
- Los Perales**
- Donald Rheem**
- Campolindo**
- Miramonte**
- Del Rey**
- Glorietta**
- Wagner Ranch**
- Sleep Hollow**
- Indian Valley**
- Buena Vista**
- Las Lomas**
- Murwood**
- Parkmead**
- Walnut Heights**
- Shell Ridge**
- Alamo**
- Rossmoor**
- Castle Hill**
- Saranap**
- Acalanes Ridge**
- Reliez Valley**
- Contra Costa Centre**
- Walnut Creek**
- San Miguel**
- Alamo**
- Danville**
- Orinda**
- Eastport**
- Canyon**



Measure T Results by Voting Precinct



District Student Special Education/504 Data per Map Option



Trustee Area	Option 1	Option 2	Option 3	Option 4
	% Share	% Share	% Share	% Share
Trustee Area No. 1	13.2%	13.1%	16.7%	14.0%
Trustee Area No. 2	9.6%	10.6%	14.8%	14.9%
Trustee Area No. 3	25.3%	24.5%	16.8%	18.4%
Trustee Area No. 4	22.1%	23.4%	23.2%	22.1%
Trustee Area No. 5	27.2%	25.9%	25.9%	28.0%
Out of District	2.6%	2.6%	2.6%	2.6%
Total Population	100.0%	100.0%	100.0%	100.0%

District Student Special Education/504 Data per Map Option



F3 Law

Trustee Area	Option 2A	Option 2B	Option 5
	% Share	% Share	% Share
Trustee Area No. 1	13.1%	13.1%	13.7%
Trustee Area No. 2	10.6%	16.0%	10.0%
Trustee Area No. 3	23.1%	16.3%	22.5%
Trustee Area No. 4	23.2%	22.5%	21.9%
Trustee Area No. 5	27.4%	29.5%	29.3%
Out of District	2.6%	2.6%	2.6%
Total Population	100.0%	100.0%	100.0%

Summary/Recap of Pre-Map Stage



■ Feedback:

- Elementary School sites are Communities of Interest ("CoI"), top priority
- Rossmoor is a CoI
- Buena Vista/Downtown Walnut Creek is a CoI
- Northeast portion: N. Main, apartments/condos along BART tracks
- Income (ensure lower income areas are being represented as much as higher income areas)
- Consider supporters of special education
- Consider those who voted in support of school bonds/parcel taxes
- Cross HS school boundaries to avoid balkanization/silos
- All trustees are accountable to all schools

Summary/Recap of 1st Map Public Hearing



F3 Law

■ Feedback:

- The more Elementary School attendance areas intact, the better
- Positive feedback on Maps 2 and 4
- Try to ensure all of Rheem ES attendance area can be intact
- Find the best attributes from Maps 2 and 4 and see if its possible to have more ES attendance areas intact
- Ensure Buena Vista/Downtown Walnut Creek is not with Springhill
- Draw a map option where the Miramonte HS attendance area is intact

Summary/Recap of 2nd Map Public Hearing



F3 Law

■ Feedback:

- Board consensus that Maps 1 and 3 are not preferred, likely “eliminated”
- Positive feedback regarding Map 2A
- Positive feedback (but some noted concerns) regarding Maps 2, 4, and 5
- Some participants did not like how Rossmoor was in Area 3 in Map 2B

Current Step: Draft Maps



- Draw Draft Trustee Area Plans
 - Demographer to use 2020 Census Data and additionally permitted updated data.
 - Population must be as equal “as is practicable” – people, not citizens.
 - Ed Code section 1002: “...trustee areas shall be as nearly equal in population...”
 - A certain amount of deviation (10%) may be permitted.

Criteria for Consideration

- Comply with the U.S. Constitution.
- Comply with the California Constitution.
- **Population Balance:**
 - Each area shall contain nearly equal number of inhabitants
- **Comply with the Federal Voting Rights Act:**
 - Determine whether it is possible to create an election district or districts in which a minority group is sufficiently large and geographically compact to constitute a majority in a single-member district.

Criteria for Consideration

AB 764 / Elections Code § 21130



Order of priority:

- ❑ Contiguous
- ❑ Local Neighborhoods/Communities of Interest
- ❑ City/Census designated places
- ❑ Natural/artificial boundaries
- ❑ Geographical compactness

Other Criteria for Consideration:

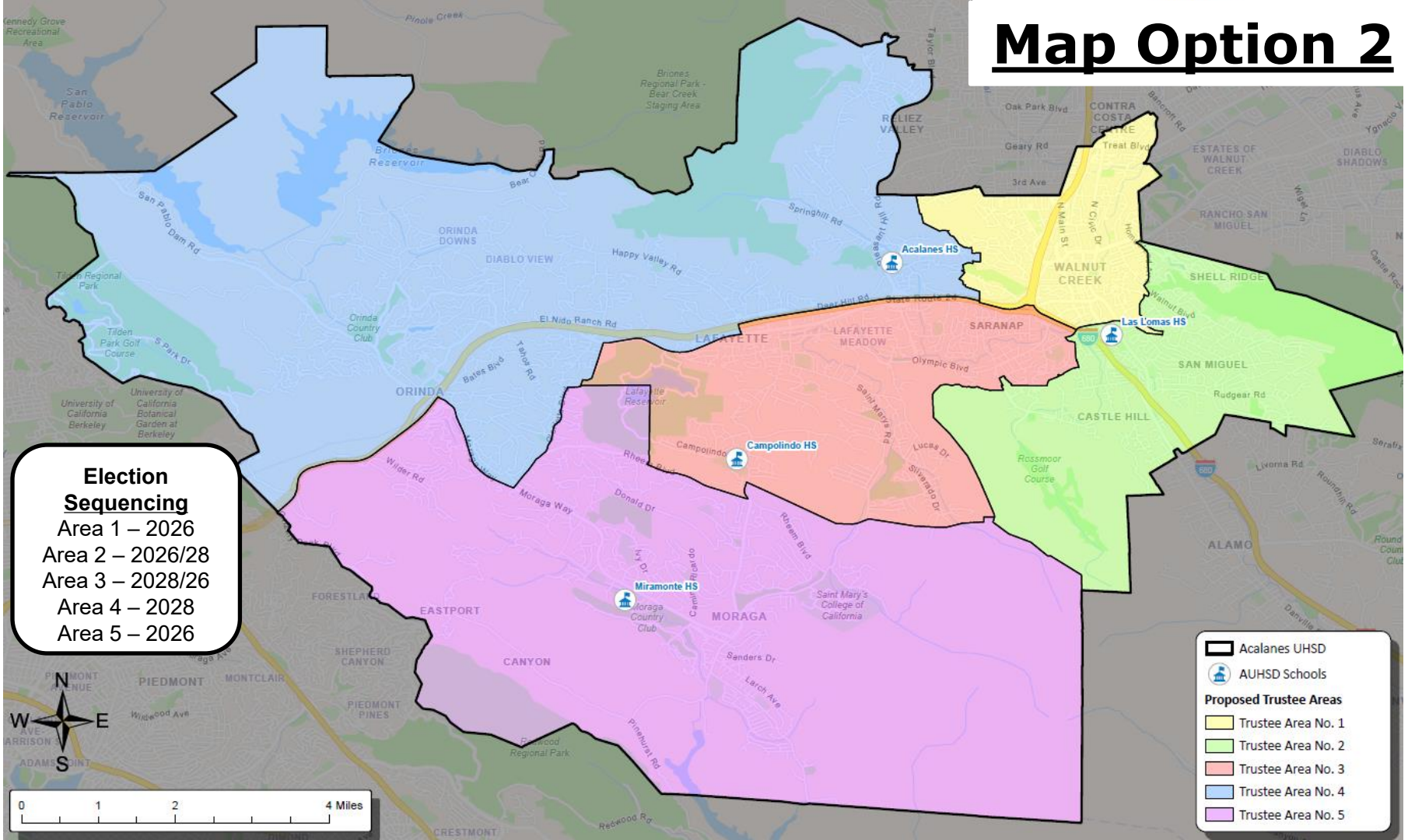
- ❑ Other local considerations
- ❑ May not adopt boundaries for the purpose of favoring/discriminating against an incumbent, political candidate or political party.

The Map Options - Background

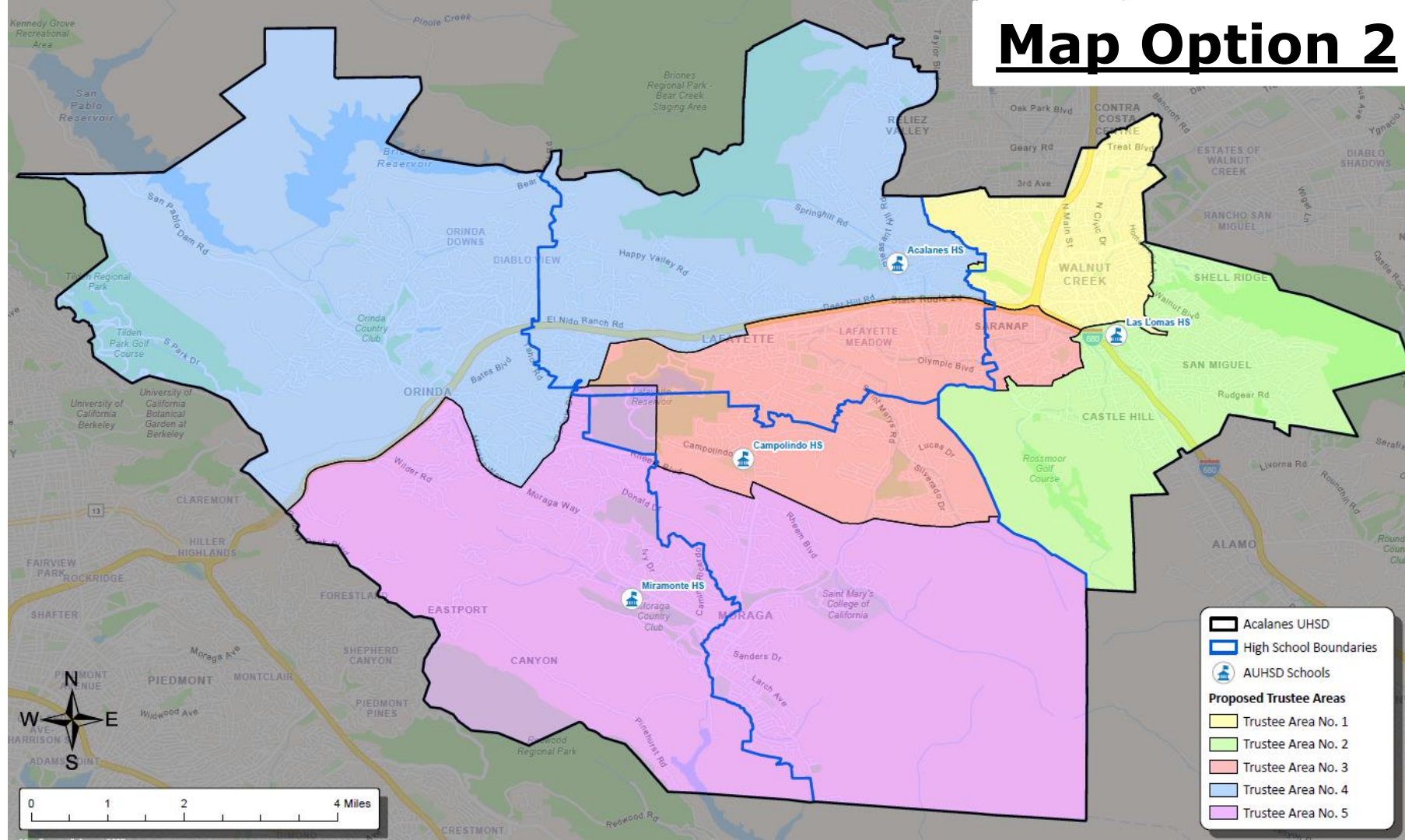


- Each map was randomly assigned a number as a name (i.e., “Option 1,” “Option 2,” etc.)
- The number name of the map has nothing to do with the numbers of each trustee area on each map.
- Each map option has 5 balanced Trustee Areas.
- On each map:
 - Trustee Area 1 is shaded in **YELLOW**
 - Trustee Area 2 is shaded in **GREEN**
 - Trustee Area 3 is shaded in **RED**
 - Trustee Area 4 is shaded in **BLUE**
 - Trustee Area 5 is shaded in **PURPLE**

Map Option 2



Map Option 2



Map Option 2

11 of 17 ES Attendance Areas kept intact

Legend:

- Alhambra UHSD
- Feeder District ES Attendance Boundaries
- AUHSU Schools

Proposed Trustee Areas

- Trustee Area No. 1
- Trustee Area No. 2
- Trustee Area No. 3
- Trustee Area No. 4
- Trustee Area No. 5

Map Option 2

11 of 17 ES Attendance Areas kept intact

Legend:

- Acalanes UHSD
- Feeder District ES Attendance Boundaries
- AUHSD Schools
- Proposed Trustee Areas**
 - Trustee Area No. 1
 - Trustee Area No. 2
 - Trustee Area No. 3
 - Trustee Area No. 4
 - Trustee Area No. 5

-
- Map Option 2**
- 11 of 17 ES Attendance Areas kept intact
- Legend:**
- Acalanes UHSD
 - Feeder District ES Attendance Boundaries
 - AUHSD Schools
 - Proposed Trustee Areas**
 - Trustee Area No. 1
 - Trustee Area No. 2
 - Trustee Area No. 3
 - Trustee Area No. 4
 - Trustee Area No. 5

Map Option 2

11 of 17 ES Attendance Areas kept intact

Legend:

- Acalanes UHSD
- Feeder District ES Attendance Boundaries
- AUHSD Schools
- Proposed Trustee Areas**
 - Trustee Area No. 1
 - Trustee Area No. 2
 - Trustee Area No. 3
 - Trustee Area No. 4
 - Trustee Area No. 5

-
- Map Option 2**
- 11 of 17 ES Attendance Areas kept intact
- Legend:**
- Acalanes UHSD
 - Feeder District ES Attendance Boundaries
 - AUHSD Schools
 - Proposed Trustee Areas**
 - Trustee Area No. 1
 - Trustee Area No. 2
 - Trustee Area No. 3
 - Trustee Area No. 4
 - Trustee Area No. 5

Map Option 2

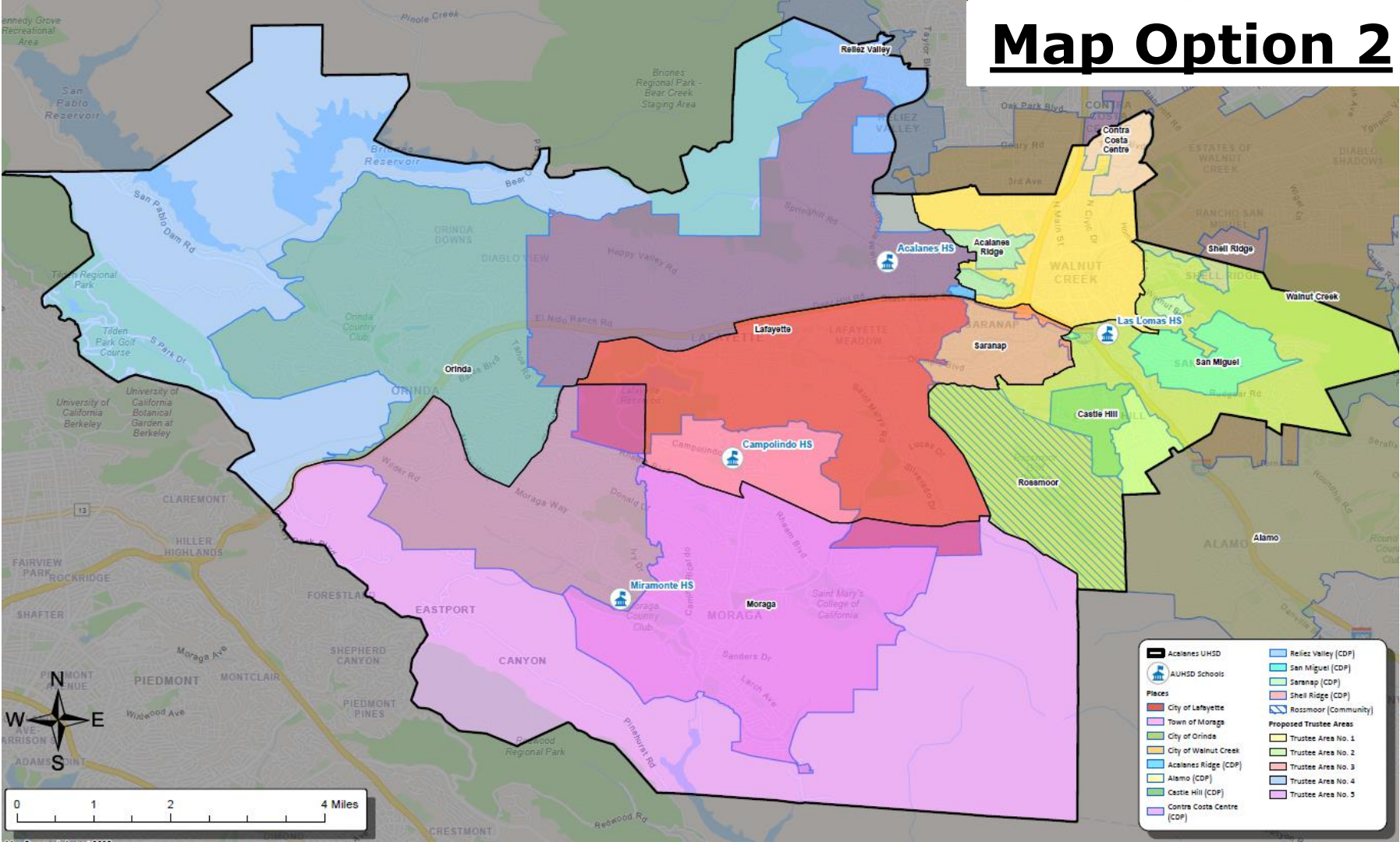
This map illustrates the proposed trustee areas for the Acalanes Union High School District (UHSD). The map is color-coded to represent different communities and school districts. Key locations include Lafayette, Moraga, Orinda, Walnut Creek, and San Miguel. The map includes a legend, a scale bar (0 to 4 miles), and a north arrow. The legend identifies Acalanes UHSD, AUHSD Schools, and various places like Lafayette, Moraga, Orinda, and Walnut Creek. It also lists proposed trustee areas and their corresponding colors.

Legend:

- Acalanes UHSD** (Black outline)
- AUHSD Schools** (Blue outline)
- Places** (Color-coded squares):
 - City of Lafayette (Red)
 - Town of Moraga (Pink)
 - City of Orinda (Green)
 - City of Walnut Creek (Yellow)
 - Acalanes Ridge (COP) (Light Blue)
 - Alamo (COP) (Light Green)
 - Castle Hill (COP) (Light Purple)
 - Contra Costa Centre (COP) (Light Blue)
 - Reliez Valley (COP) (Light Blue)
 - San Miguel (COP) (Light Green)
 - Saranap (COP) (Light Green)
 - Shell Ridge (COP) (Light Purple)
 - Rossmoor (Community) (Hatched Green)
- Proposed Trustee Areas** (Color-coded squares):
 - Trustee Area No. 1 (Light Blue)
 - Trustee Area No. 2 (Light Green)
 - Trustee Area No. 3 (Light Purple)
 - Trustee Area No. 4 (Light Blue)
 - Trustee Area No. 5 (Light Purple)

Scale: 0 to 4 Miles

North Arrow: W, N, E, S



Map 2 – Total Population Data



Total Population:		119,039	Ideal Population:		23,808	Variance:		8.7%			
Total Population (2020 Census)											
	Trustee Area 1		Trustee Area 2		Trustee Area 3		Trustee Area 4		Trustee Area 5		
Population		24,123		24,902		23,102		24,072		22,840	
Population Variance		315		1,094		-706		264		-968	
		1.3%		4.6%		-3.0%		1.1%		-4.1%	
Hispanic/Latino		13.0%		7.7%		9.2%		6.6%		9.3%	
White		57.6%		72.5%		68.7%		70.9%		62.5%	
Black/ African American		3.2%		1.7%		1.0%		0.7%		1.3%	
American Indian/ Alaska Native		0.2%		0.1%		0.1%		0.1%		0.1%	
Asian		18.4%		12.8%		13.0%		14.0%		18.5%	
Native Hawaiian/ Other Pacific Islander		0.2%		0.2%		0.1%		0.1%		0.2%	
Other		0.8%		0.5%		0.6%		0.6%		0.6%	
Two or More Races		6.7%		4.7%		7.4%		7.0%		7.6%	

Map 2 – CVAP Data



Citizens by Voting Age Population Estimate (2019-2023)

	Trustee Area 1	Trustee Area 2	Trustee Area 3	Trustee Area 4	Trustee Area 5
Population	18,685	19,690	15,810	17,449	15,937
Hispanic/Latino	13.1%	5.6%	8.1%	5.1%	9.7%
White	65.1%	79.2%	74.3%	79.8%	67.4%
Black/ African American	3.5%	2.1%	1.6%	0.6%	0.7%
American Indian/ Alaska Native	0.4%	0.1%	0.1%	0.0%	0.3%
Asian	13.9%	10.2%	11.0%	10.7%	18.6%
Native Hawaiian/ Other Pacific Islander	0.1%	0.1%	0.0%	0.0%	0.2%
Other	N/A	N/A	N/A	N/A	N/A
Two or More Races	4.0%	2.8%	4.9%	3.7%	3.1%

Map 2 – Income Data



Household Income (2019-2023)					
	Trustee Area 1	Trustee Area 2	Trustee Area 3	Trustee Area 4	Trustee Area 5
Income Less Than \$20K	6.5%	4.1%	5.1%	5.4%	6.5%
Income \$20K - \$50K	11.5%	10.8%	6.7%	5.3%	5.5%
Income \$50K - \$75K	7.3%	7.8%	6.6%	4.6%	5.2%
Income \$75K - \$100K	9.7%	10.3%	8.1%	3.9%	5.3%
Income \$100K - \$200K	34.6%	27.9%	27.1%	19.6%	24.4%
Income Over \$200K	30.4%	39.2%	46.4%	61.2%	53.1%

Map Option 4

Election Sequencing
 Area 1 – 2026
 Area 2 – 2026
 Area 3 – 2028
 Area 4 – 2028
 Area 5 – 2026

Legend:
 Acalanes UHSD
 AUHSD Schools
 Proposed Trustee Areas
 Trustee Area No. 1
 Trustee Area No. 2
 Trustee Area No. 3
 Trustee Area No. 4
 Trustee Area No. 5

Election Sequencing
Area 1 – 2026
Area 2 – 2026
Area 3 – 2028
Area 4 – 2028
Area 5 – 2026


Election Sequencing
Area 1 – 2026
Area 2 – 2026
Area 3 – 2028
Area 4 – 2028
Area 5 – 2026

Election Sequencing
Area 1 – 2026
Area 2 – 2026
Area 3 – 2028
Area 4 – 2028
Area 5 – 2026

Election Sequencing
Area 1 – 2026
Area 2 – 2026
Area 3 – 2028
Area 4 – 2028
Area 5 – 2026

Election Sequencing
Area 1 – 2026
Area 2 – 2026
Area 3 – 2028
Area 4 – 2028
Area 5 – 2026

Election Sequencing
Area 1 – 2026
Area 2 – 2026
Area 3 – 2028
Area 4 – 2028
Area 5 – 2026


☐ Acalanes UHSD AUHSD Schools

Proposed Trustee Areas

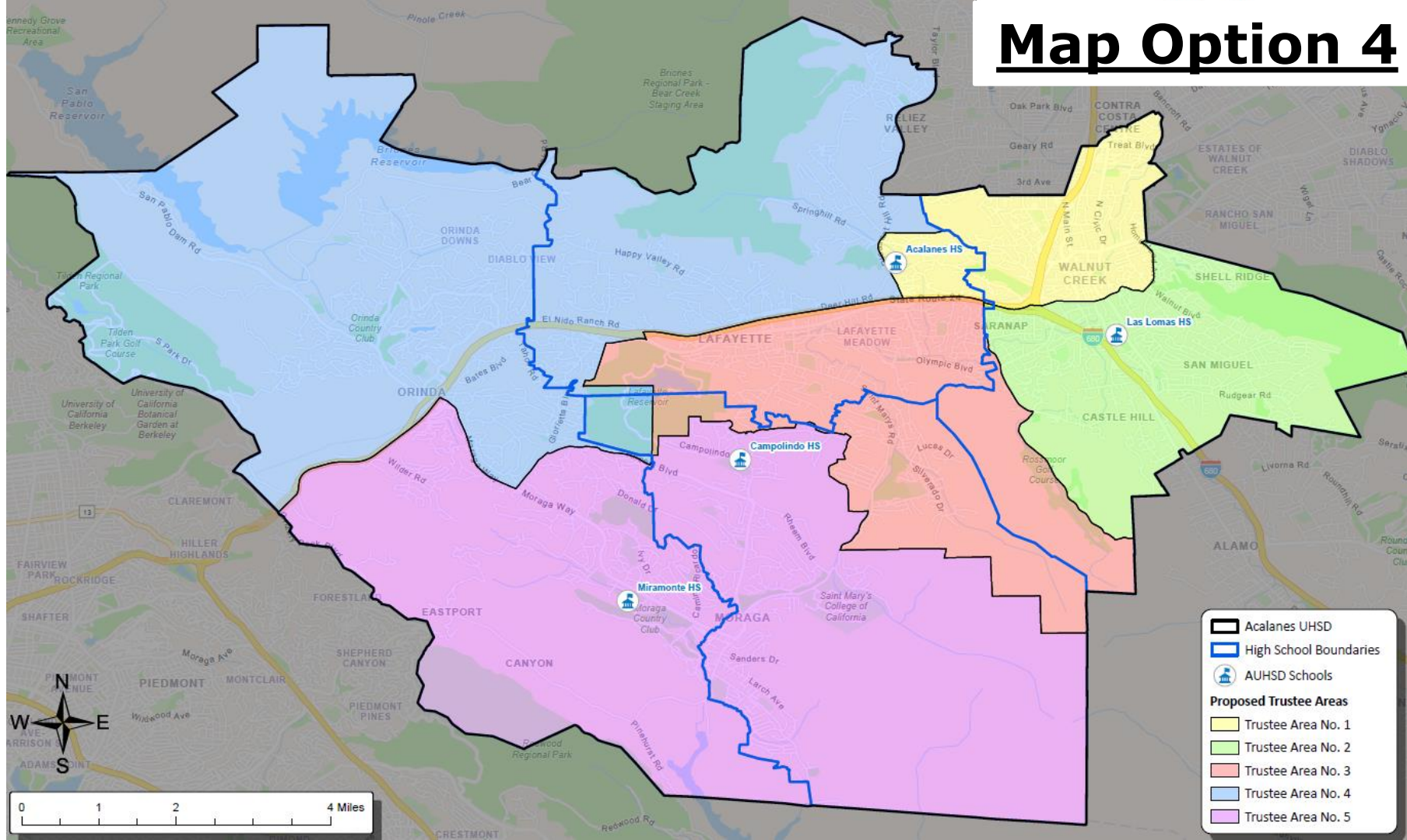
 Trustee Area No. 1

 Trustee Area No. 2

Trustee Area No. 3

 Trustee Area No. 4

Map Option 4



Map Option 4

10 of 17 ES Attendance Areas kept intact

Legend:

- Acalanes UHSD
- Feeder District ES Attendance Boundaries
- AUHS Schools

Proposed Trustee Areas

- Trustee Area No. 1
- Trustee Area No. 2
- Trustee Area No. 3
- Trustee Area No. 4
- Trustee Area No. 5

Map Option 4

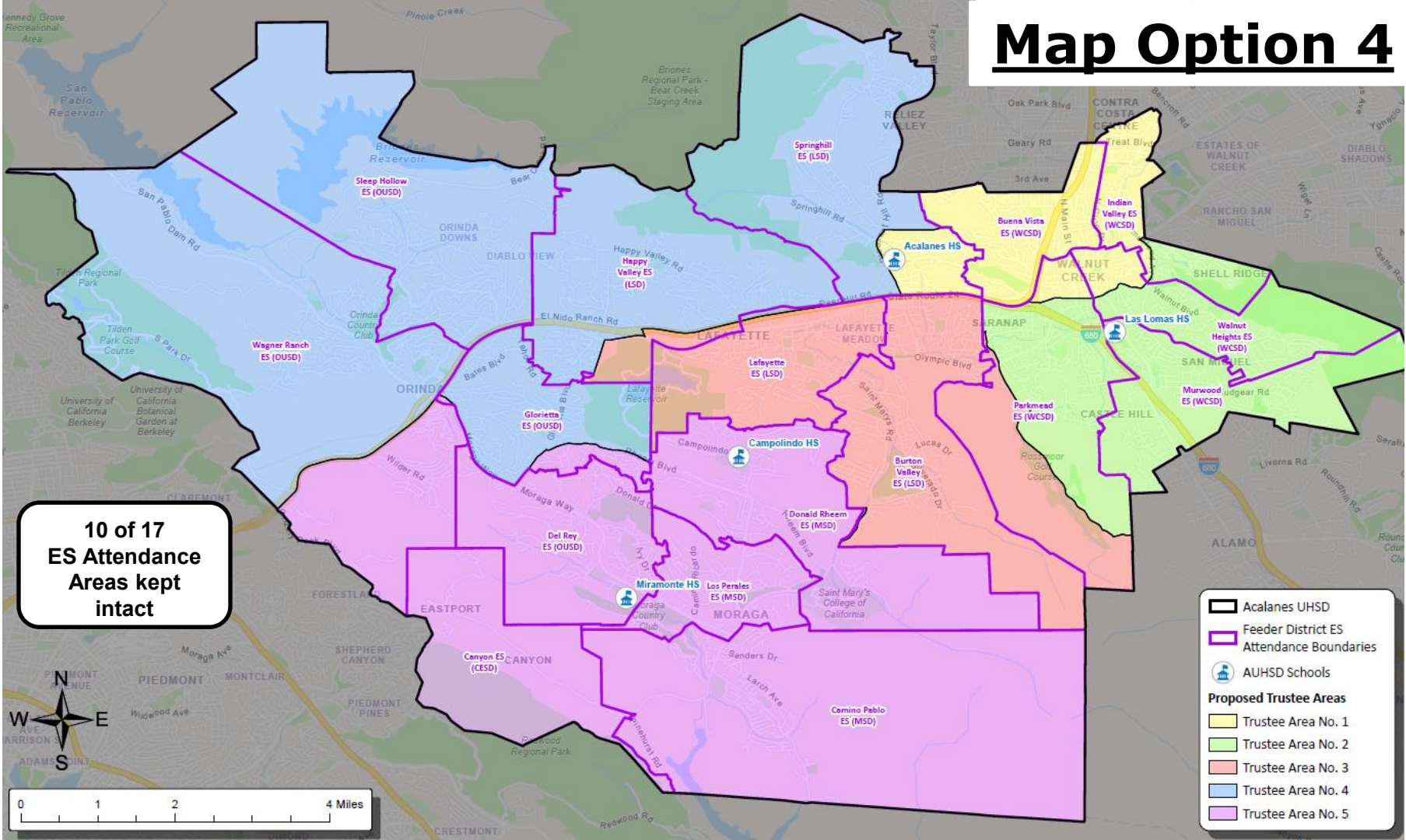
10 of 17 ES Attendance Areas kept intact

Legend:

- Acalanes UHSD
- Feeder District ES Attendance Boundaries
- AUHS Schools

Proposed Trustee Areas

- Trustee Area No. 1
- Trustee Area No. 2
- Trustee Area No. 3
- Trustee Area No. 4
- Trustee Area No. 5



Map Option 4

10 of 17 ES Attendance Areas kept intact

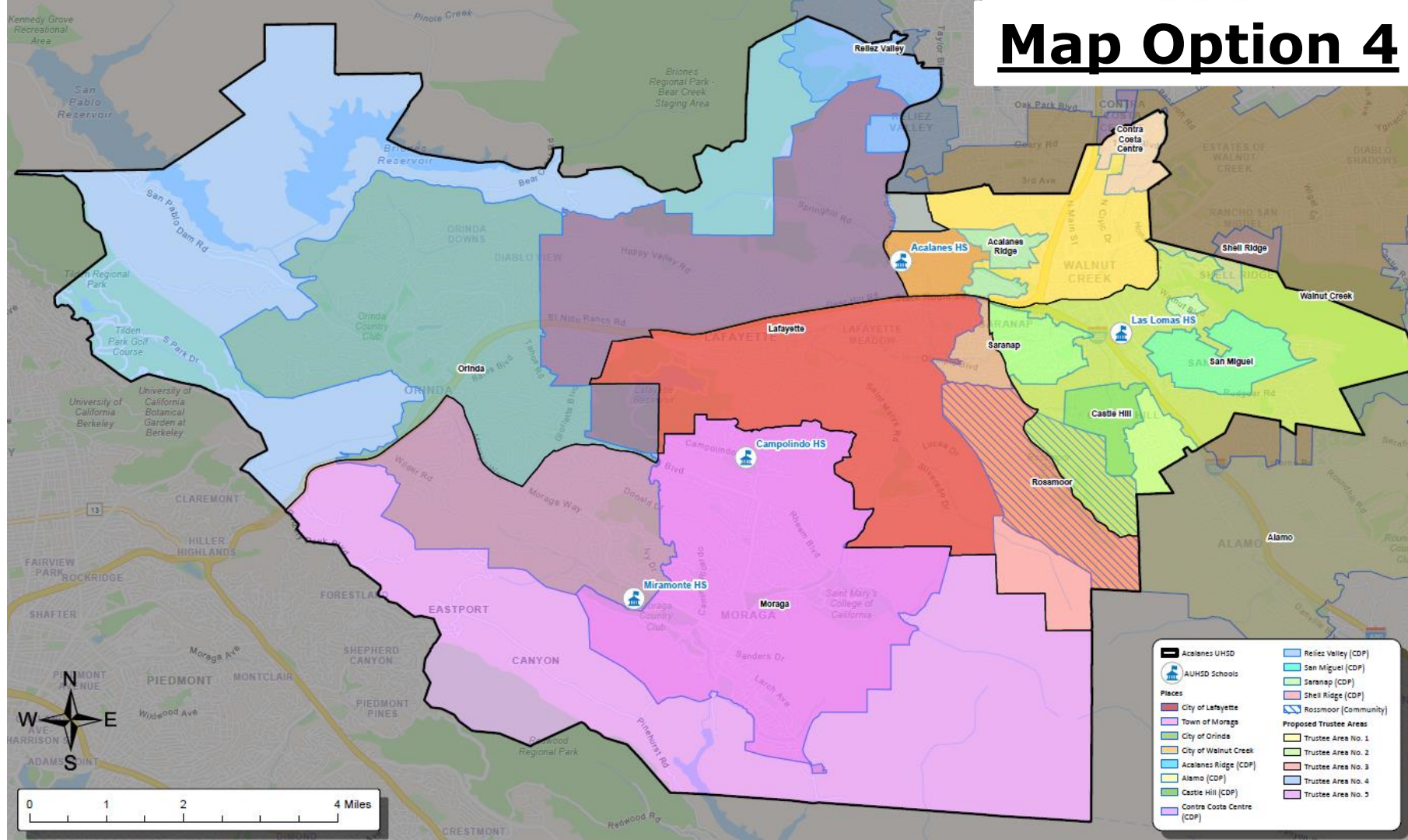
Legend:

- Acalanes UHSD
- Feeder District ES Attendance Boundaries
- AUHS Schools

Proposed Trustee Areas

- Trustee Area No. 1
- Trustee Area No. 2
- Trustee Area No. 3
- Trustee Area No. 4
- Trustee Area No. 5

Map Option 4



Map 4 – Total Population Data



F3 Law

Total Population:		119,039	Ideal Population:		23,808	Variance:		5.2%
Total Population (2020 Census)								
	Trustee Area 1	Trustee Area 2	Trustee Area 3	Trustee Area 4	Trustee Area 5			
Population	23,533	24,236	24,183	22,997	24,090			
Population Variance	-275	428	375	-811	282			
	-1.2%	1.8%	1.6%	-3.4%	1.2%			
Hispanic/Latino	12.5%	10.1%	7.5%	6.5%	9.0%			
White	57.8%	68.7%	72.5%	71.3%	62.3%			
Black/ African American	3.0%	2.1%	0.8%	0.7%	1.2%			
American Indian/ Alaska Native	0.1%	0.1%	0.1%	0.1%	0.1%			
Asian	18.8%	12.3%	12.6%	13.8%	19.0%			
Native Hawaiian/ Other Pacific Islander	0.2%	0.2%	0.1%	0.1%	0.2%			
Other	0.8%	0.6%	0.6%	0.5%	0.6%			
Two or More Races	6.7%	5.9%	5.9%	7.0%	7.7%			

Map 4 – CVAP Data

Citizens by Voting Age Population Estimate (2019-2023)					
	Trustee Area 1	Trustee Area 2	Trustee Area 3	Trustee Area 4	Trustee Area 5
Population	18,134	17,948	18,016	16,594	16,879
Hispanic/Latino	13.0%	8.3%	5.7%	5.0%	9.2%
White	65.3%	74.1%	79.7%	79.7%	67.9%
Black/ African American	3.6%	2.4%	1.3%	0.7%	0.7%
American Indian/ Alaska Native	0.4%	0.0%	0.1%	0.0%	0.3%
Asian	13.7%	11.0%	9.9%	10.9%	18.4%
Native Hawaiian/ Other Pacific Islander	0.1%	0.0%	0.1%	0.0%	0.2%
Other	N/A	N/A	N/A	N/A	N/A
Two or More Races	3.9%	4.1%	3.2%	3.7%	3.4%

Map 4 – Income Data



Household Income (2019-2023)					
	Trustee Area 1	Trustee Area 2	Trustee Area 3	Trustee Area 4	Trustee Area 5
Income Less Than \$20K	6.7%	3.9%	5.1%	5.3%	6.6%
Income \$20K - \$50K	11.5%	7.0%	10.6%	5.2%	5.3%
Income \$50K - \$75K	6.4%	7.8%	6.7%	4.7%	5.9%
Income \$75K - \$100K	9.5%	8.8%	9.1%	3.9%	5.6%
Income \$100K - \$200K	34.2%	30.7%	25.8%	19.4%	23.8%
Income Over \$200K	31.7%	41.7%	42.8%	61.5%	52.9%

Map Option 2A

Election Sequencing
 Area 1 – 2026
 Area 2 – 2026
 Area 3 – 2028
 Area 4 – 2028
 Area 5 – 2026

Legend:
 Acalanes UHSD
 AUHSD Schools
 Proposed Trustee Areas
 Trustee Area No. 1
 Trustee Area No. 2
 Trustee Area No. 3
 Trustee Area No. 4
 Trustee Area No. 5

Area 1 – 2026
Area 2 – 2026
Area 3 – 2028
Area 4 – 2028
Area 5 – 2026

 AUHSD Schools

Proposed Trustee Areas

 Trustee Area No. 1

Trustee Area No. 2

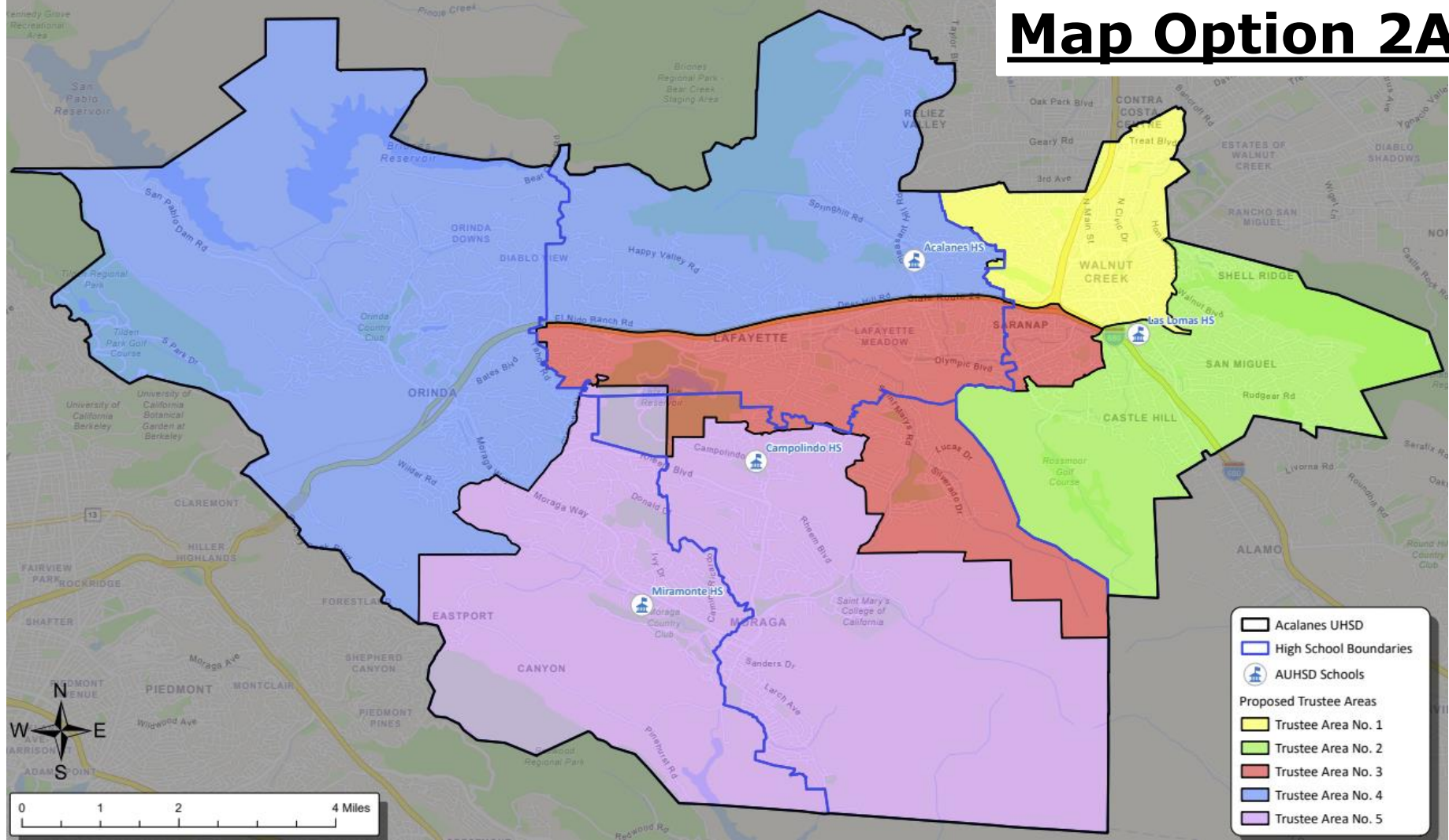
Trustee Area No. 3

Trustee Area No. 4

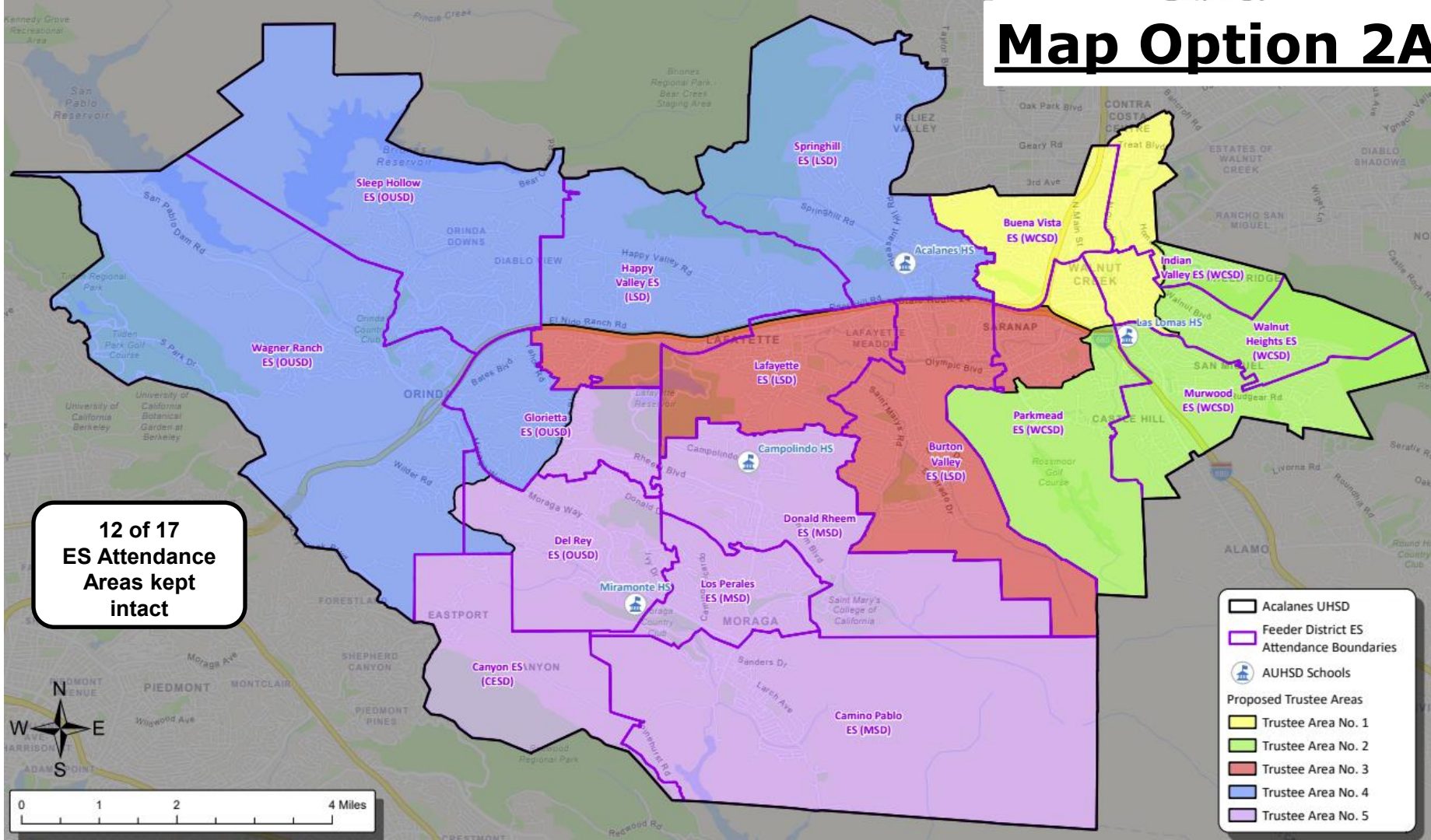


0	1	2	4 Miles
---	---	---	---------

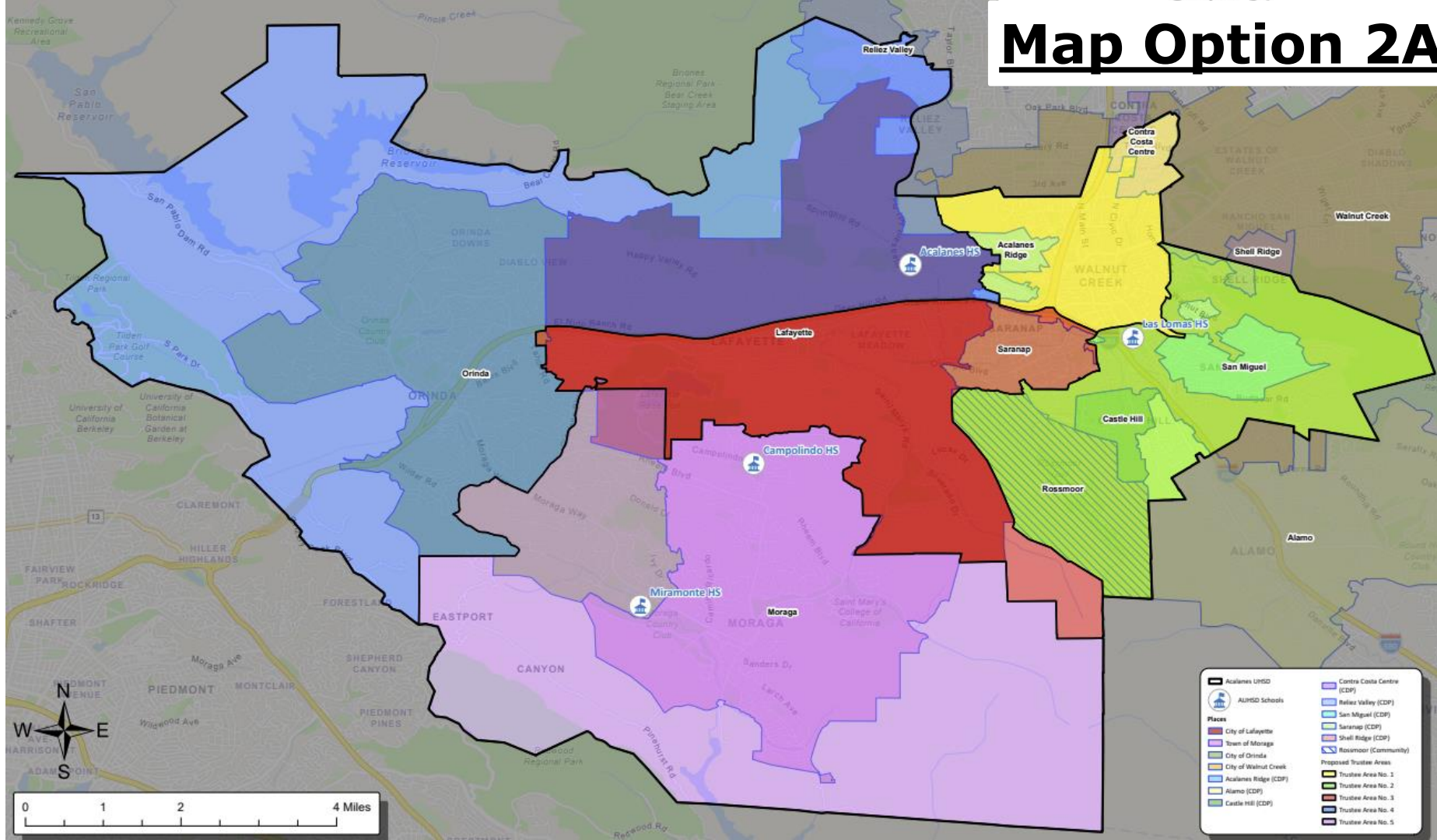
Map Option 2A



Map Option 2A



Map Option 2A



Map 2A – Total Population Data



F3 Law

Total Population:		119,039	Ideal Population:		23,808	Variance:		8.7%
Total Population (2020 Census)								
	Trustee Area 1	Trustee Area 2	Trustee Area 3	Trustee Area 4	Trustee Area 5			
Population	24,123	24,902	22,835	24,023	23,156			
Population Variance	315	1,094	-973	215	-652			
	1.3%	4.6%	-4.1%	0.9%	-2.7%			
Hispanic/Latino	13.0%	7.7%	9.5%	6.6%	9.0%			
White	57.6%	72.5%	69.4%	69.6%	63.2%			
Black/ African American	3.2%	1.7%	1.0%	0.8%	1.1%			
American Indian/ Alaska Native	0.2%	0.1%	0.1%	0.1%	0.1%			
Asian	18.4%	12.8%	12.1%	15.0%	18.3%			
Native Hawaiian/ Other Pacific Islander	0.2%	0.2%	0.1%	0.1%	0.2%			
Other	0.8%	0.5%	0.6%	0.6%	0.5%			
Two or More Races	6.7%	4.7%	7.2%	7.2%	7.6%			

Map 2A – CVAP Data

Citizens by Voting Age Population Estimate (2019-2023)					
	Trustee Area 1	Trustee Area 2	Trustee Area 3	Trustee Area 4	Trustee Area 5
Population	18,685	19,690	15,429	17,498	16,269
Hispanic/Latino	13.1%	5.6%	8.6%	5.1%	9.2%
White	65.1%	79.2%	74.5%	79.8%	67.3%
Black/ African American	3.5%	2.1%	1.7%	0.6%	0.7%
American Indian/ Alaska Native	0.4%	0.1%	0.1%	0.0%	0.3%
Asian	13.9%	10.2%	10.4%	10.9%	18.8%
Native Hawaiian/ Other Pacific Islander	0.1%	0.1%	0.0%	0.0%	0.2%
Other	N/A	N/A	N/A	N/A	N/A
Two or More Races	4.0%	2.8%	4.8%	3.5%	3.5%

Map 2A – Income Data



Household Income (2019-2023)					
	Trustee Area 1	Trustee Area 2	Trustee Area 3	Trustee Area 4	Trustee Area 5
Income Less Than \$20K	6.5%	4.1%	4.8%	5.4%	6.8%
Income \$20K - \$50K	11.5%	10.8%	6.9%	5.3%	5.3%
Income \$50K - \$75K	7.3%	7.8%	5.8%	4.7%	5.9%
Income \$75K - \$100K	9.7%	10.3%	7.6%	3.9%	5.7%
Income \$100K - \$200K	34.6%	27.9%	27.0%	19.3%	25.0%
Income Over \$200K	30.4%	39.1%	47.9%	61.4%	51.3%

Map Option 2B

Election Sequencing

Area 1 – 2026

Area 2 – 2026

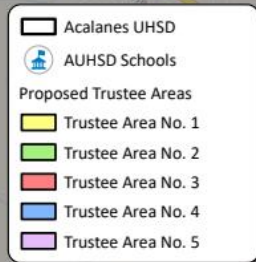
Area 3 – 2028

Area 4 – 2028

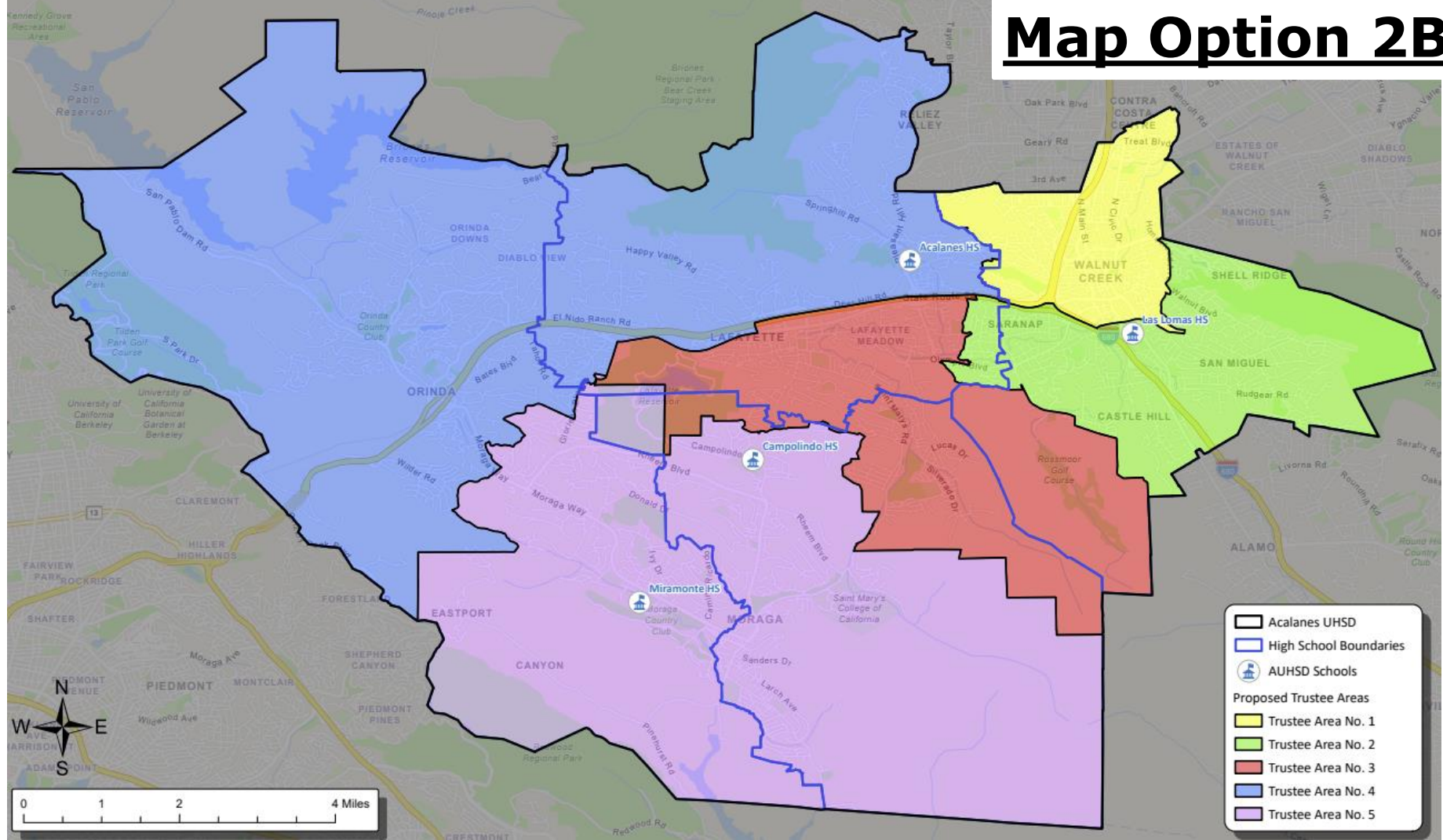
Area 5 – 2026



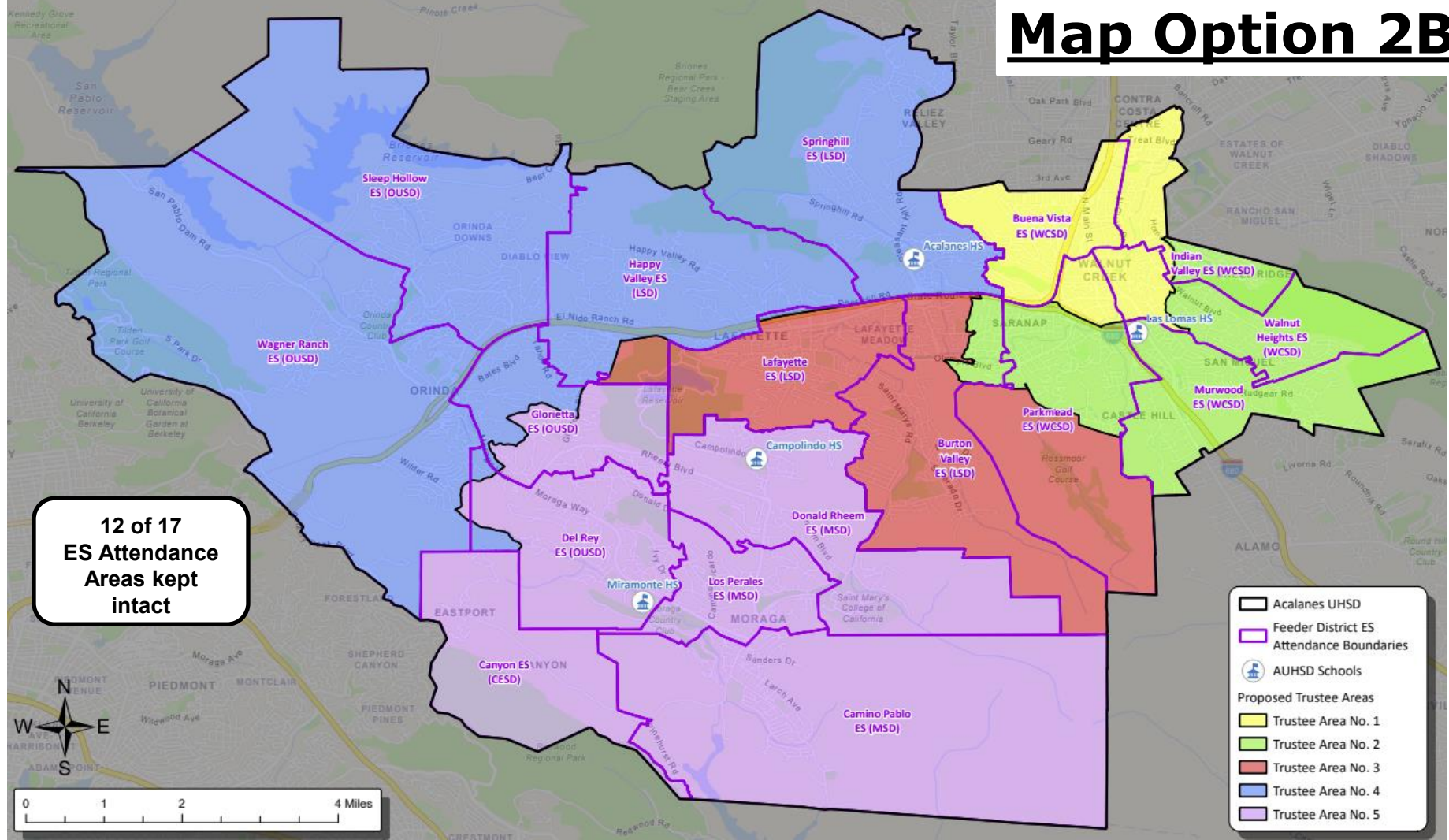
0 1 2 4 Miles



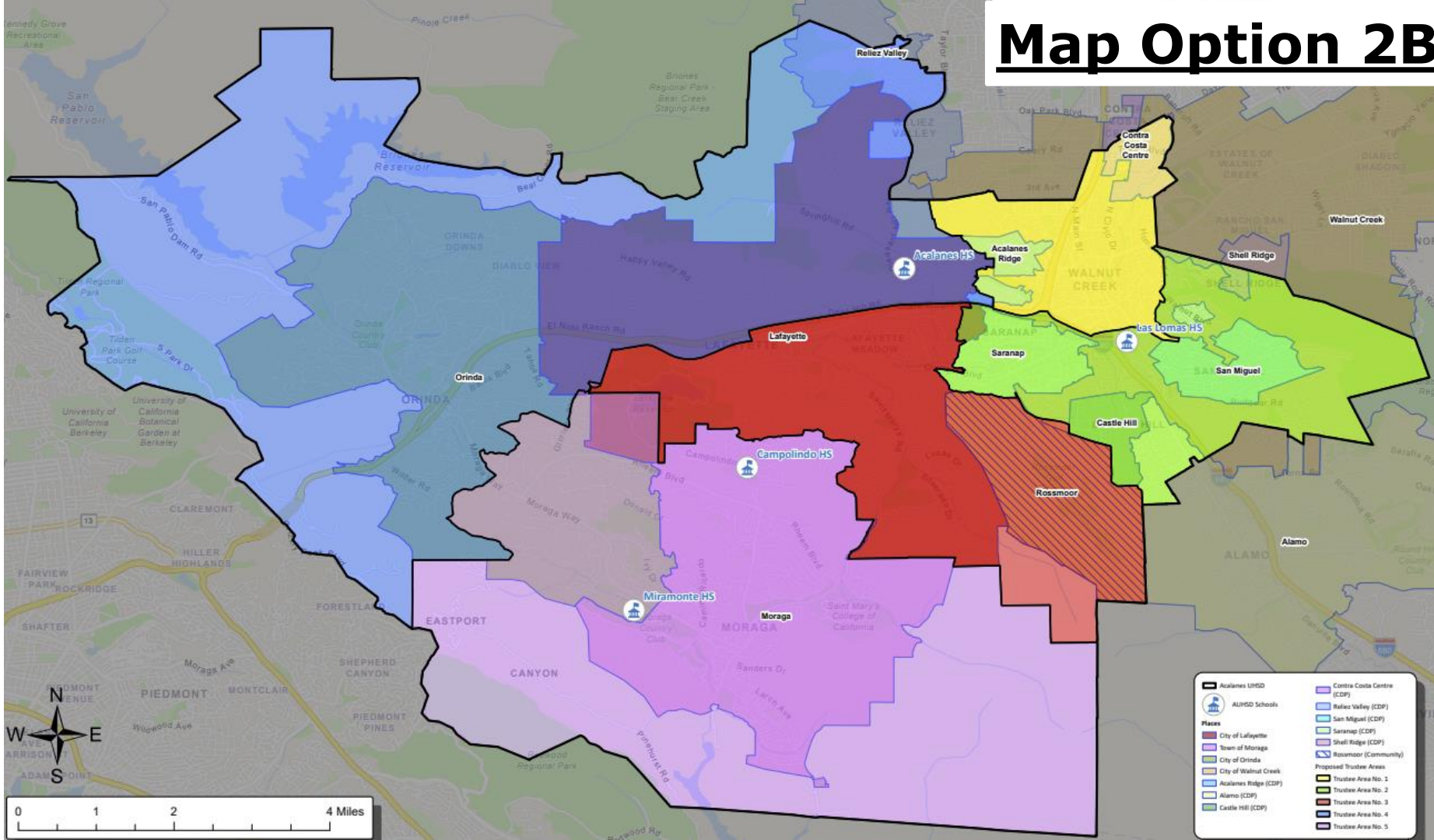
Map Option 2B



Map Option 2B



Map Option 2B



Map 2B – Total Population Data



Total Population:	119,039	Ideal Population:	23,808	Variance:	7.8%
--------------------------	----------------	--------------------------	---------------	------------------	-------------

Total Population (2020 Census)					
	Trustee Area 1	Trustee Area 2	Trustee Area 3	Trustee Area 4	Trustee Area 5
Population	24,123	22,595	23,502	24,446	24,373
Population Variance	315	-1,213	-306	638	565
	1.3%	-5.1%	-1.3%	2.7%	2.4%
Hispanic/Latino	13.0%	10.3%	6.8%	6.7%	8.9%
White	57.6%	68.6%	73.3%	69.7%	63.6%
Black/ African American	3.2%	1.9%	0.9%	0.8%	1.1%
American Indian/ Alaska Native	0.2%	0.1%	0.0%	0.1%	0.1%
Asian	18.4%	12.0%	12.9%	14.9%	18.1%
Native Hawaiian/ Other Pacific Islander	0.2%	0.2%	0.1%	0.1%	0.2%
Other	0.8%	0.7%	0.5%	0.6%	0.5%
Two or More Races	6.7%	6.4%	5.4%	7.1%	7.6%

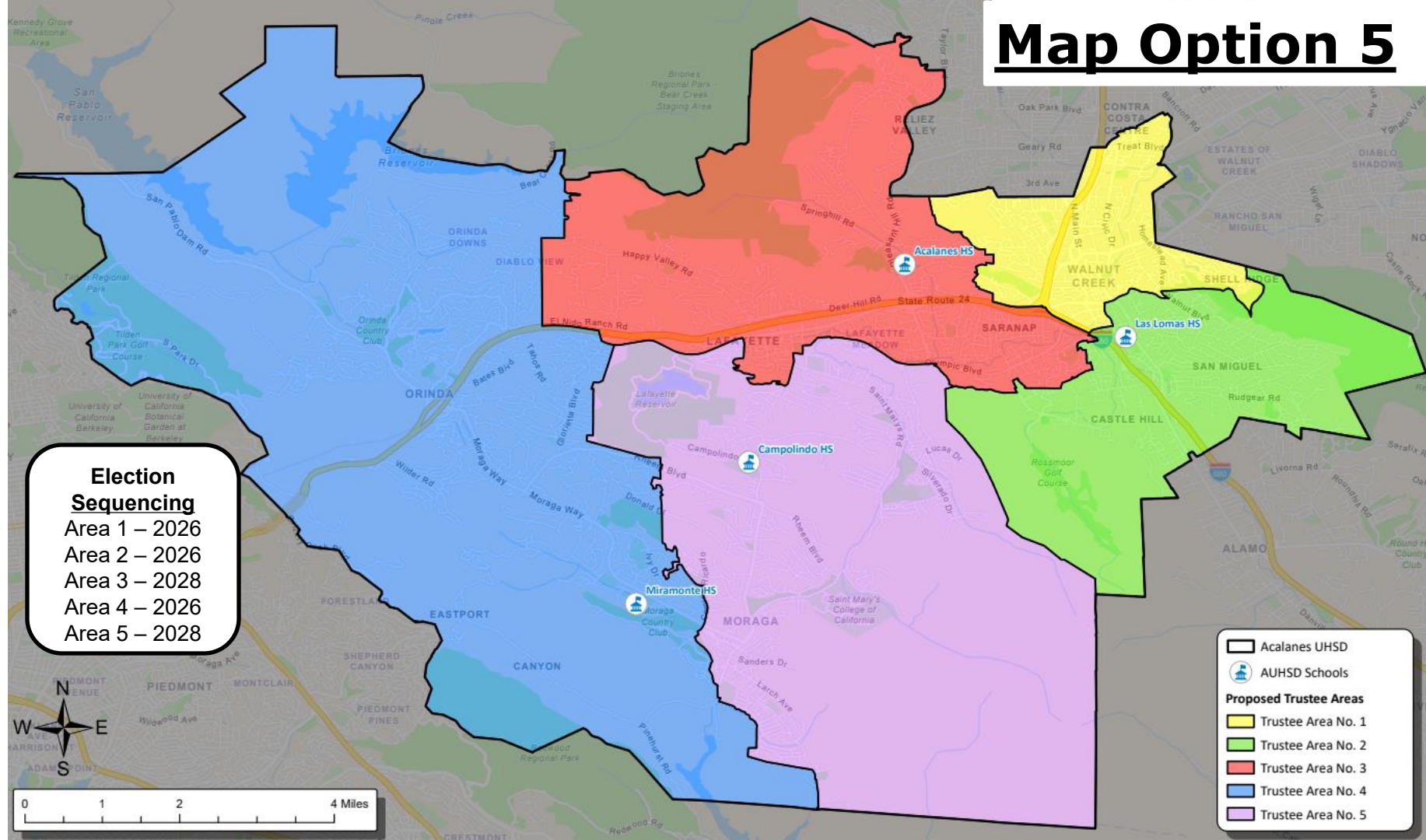
Map 2B – CVAP Data

Citizens by Voting Age Population Estimate (2019-2023)					
	Trustee Area 1	Trustee Area 2	Trustee Area 3	Trustee Area 4	Trustee Area 5
Population	18,685	16,157	18,049	17,479	17,201
Hispanic/Latino	13.1%	8.1%	5.6%	5.2%	9.1%
White	65.1%	73.8%	80.1%	79.9%	67.7%
Black/ African American	3.5%	2.7%	1.3%	0.5%	0.9%
American Indian/ Alaska Native	0.4%	0.1%	0.1%	0.0%	0.3%
Asian	13.9%	10.6%	10.0%	10.8%	18.5%
Native Hawaiian/ Other Pacific Islander	0.1%	0.0%	0.1%	0.0%	0.2%
Other	N/A	N/A	N/A	N/A	N/A
Two or More Races	4.0%	4.7%	2.7%	3.6%	3.5%

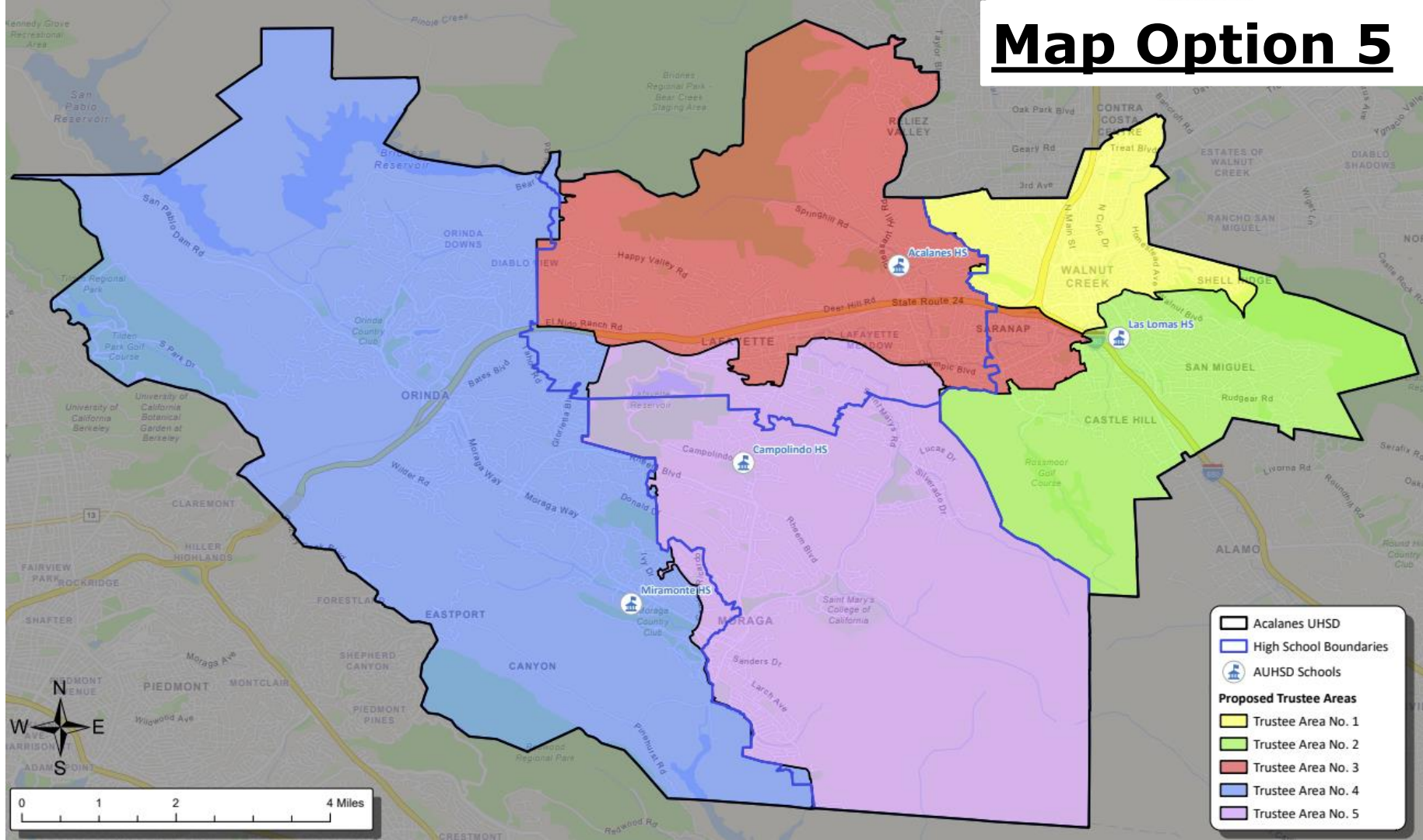
Map 2B – Income Data

Household Income (2019-2023)					
	Trustee Area 1	Trustee Area 2	Trustee Area 3	Trustee Area 4	Trustee Area 5
Income Less Than \$20K	6.5%	3.4%	5.8%	5.2%	6.7%
Income \$20K - \$50K	11.5%	5.8%	11.8%	5.3%	5.4%
Income \$50K - \$75K	7.3%	6.0%	7.6%	4.7%	5.9%
Income \$75K - \$100K	9.7%	8.8%	9.3%	3.8%	5.7%
Income \$100K - \$200K	34.6%	29.7%	25.9%	19.2%	24.9%
Income Over \$200K	30.4%	46.3%	39.6%	61.8%	51.4%

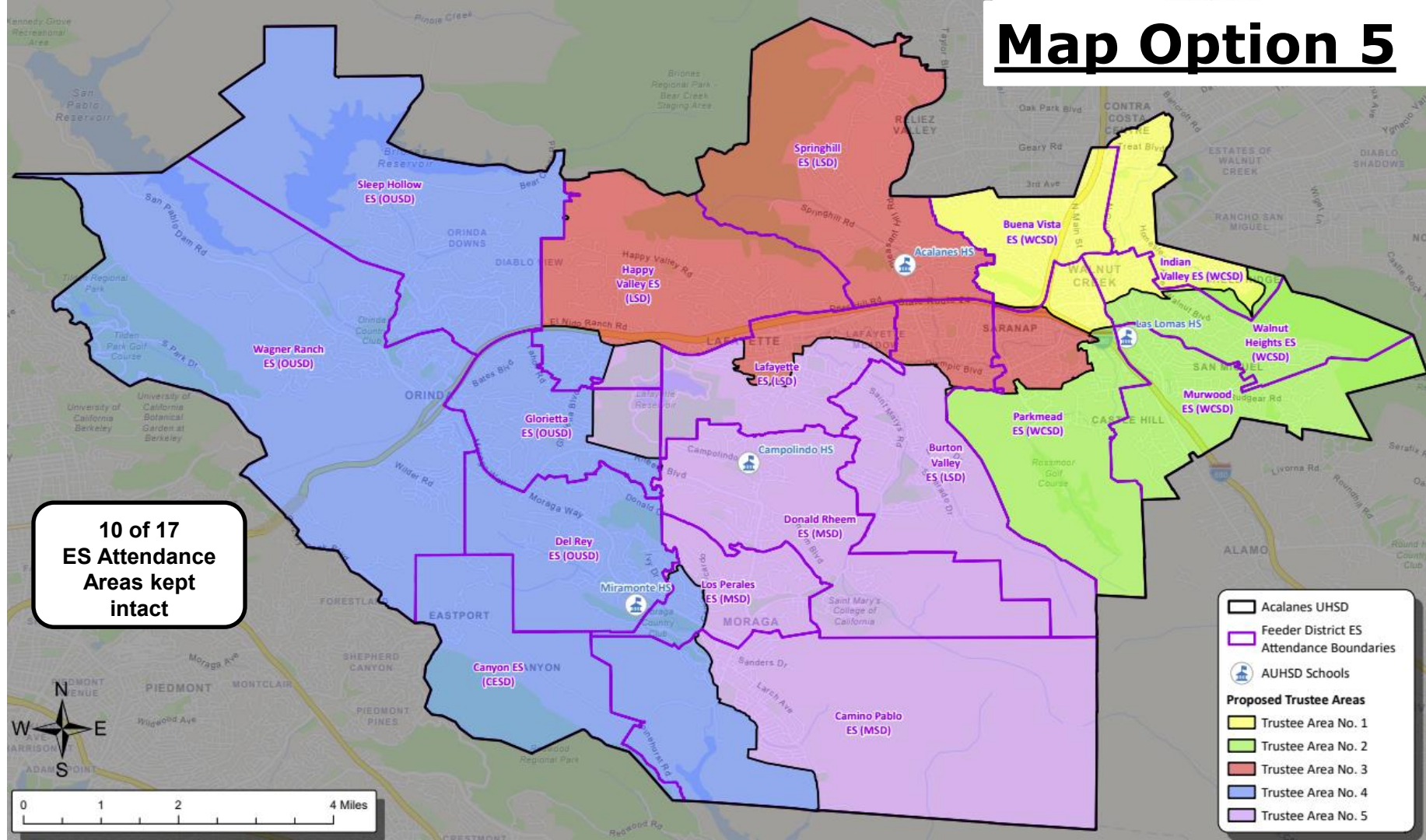
Map Option 5



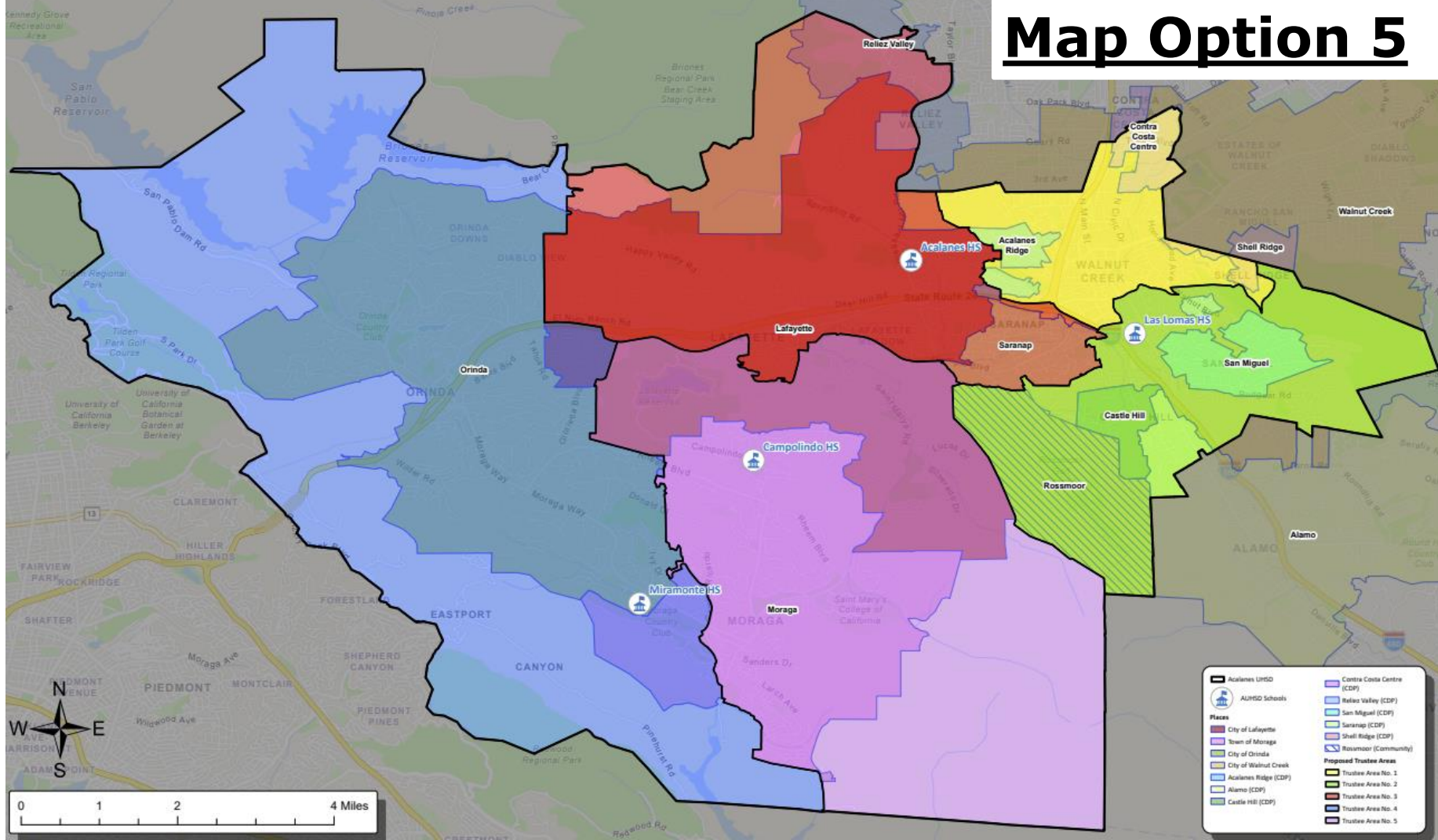
Map Option 5



Map Option 5



Map Option 5



Map 5 – Total Population Data



F3 Law

Total Population:		119,039	Ideal Population:		23,808	Variance:		5.8%
Total Population (2020 Census)								
	Trustee Area 1	Trustee Area 2	Trustee Area 3	Trustee Area 4	Trustee Area 5			
Population	24,652	24,405	23,278	23,311	23,393			
Population Variance	844	597	-530	-497	-415			
	3.5%	2.5%	-2.2%	-2.1%	-1.7%			
Hispanic/Latino	12.8%	7.7%	8.5%	6.7%	9.7%			
White	58.0%	72.4%	69.6%	67.6%	65.1%			
Black/ African American	3.2%	1.6%	1.0%	0.9%	1.0%			
American Indian/ Alaska Native	0.1%	0.1%	0.1%	0.1%	0.1%			
Asian	18.1%	12.9%	12.8%	16.9%	15.7%			
Native Hawaiian/ Other Pacific Islander	0.2%	0.2%	0.1%	0.1%	0.2%			
Other	0.9%	0.5%	0.8%	0.6%	0.4%			
Two or More Races	6.8%	4.6%	7.1%	7.1%	7.8%			

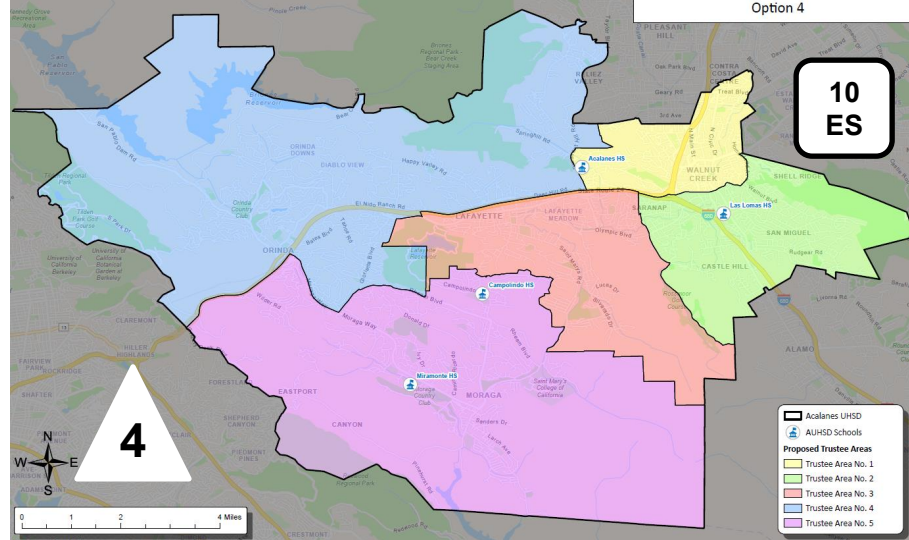
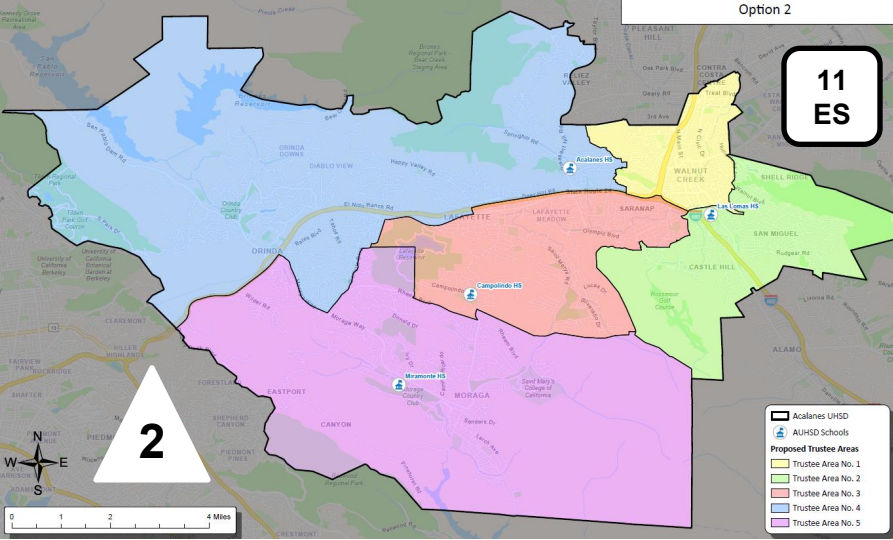
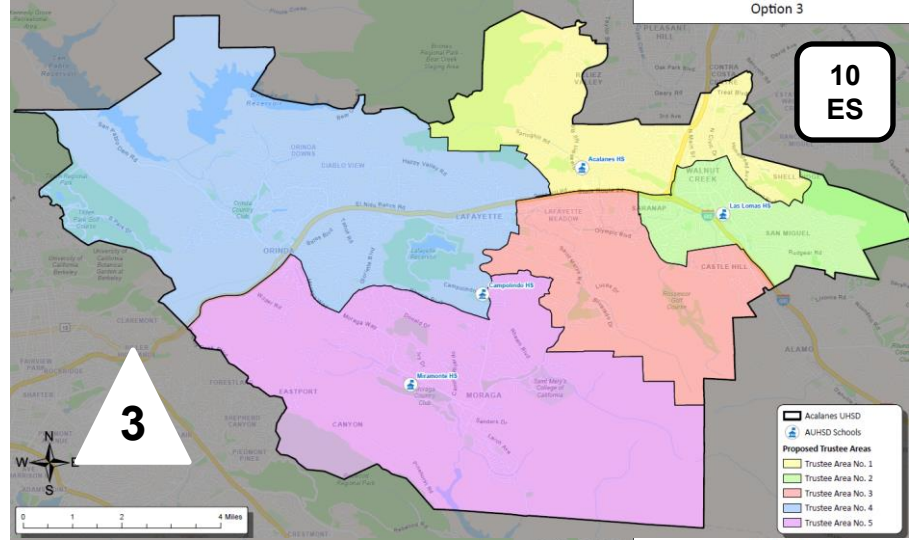
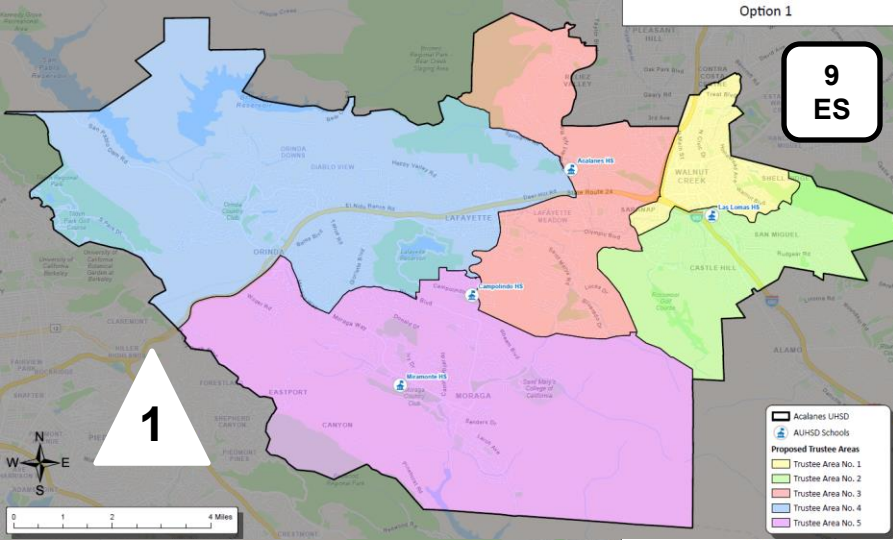
Map 5 – CVAP Data

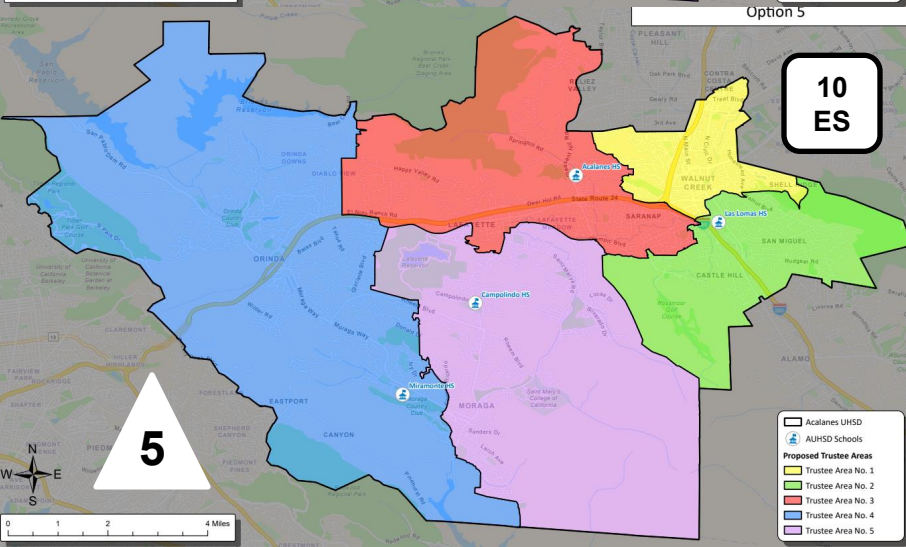
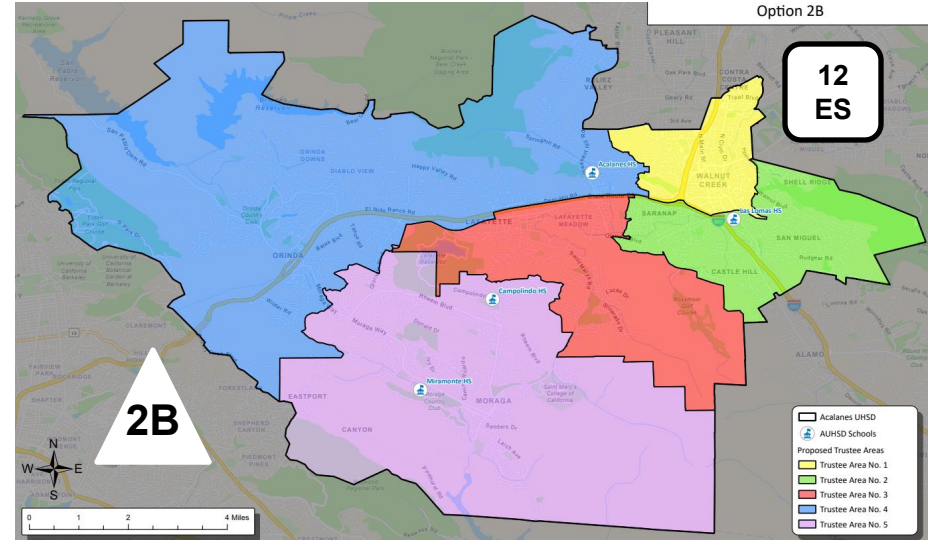
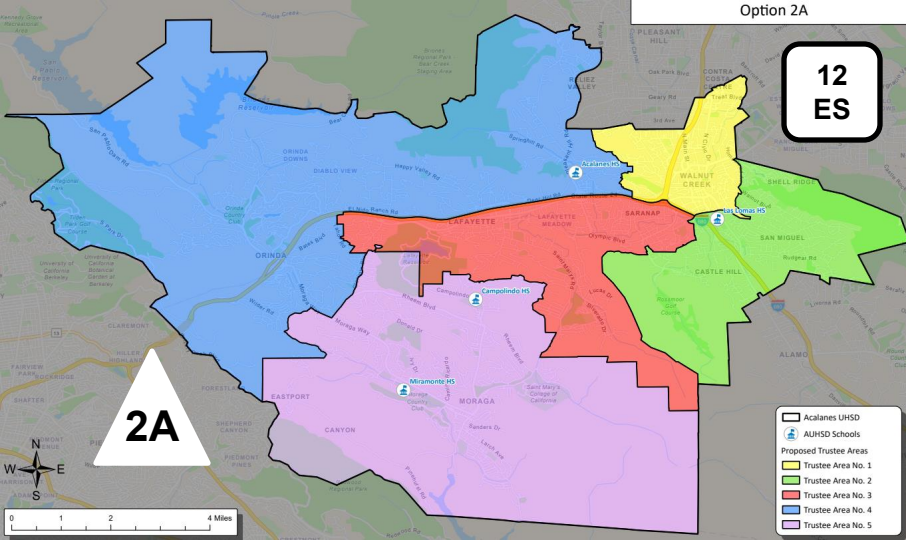
Citizens by Voting Age Population Estimate (2019-2023)					
	Trustee Area 1	Trustee Area 2	Trustee Area 3	Trustee Area 4	Trustee Area 5
Population	19,082	19,307	16,240	16,396	16,546
Hispanic/Latino	12.8%	5.8%	6.9%	5.1%	10.6%
White	66.2%	78.4%	75.4%	75.4%	71.3%
Black/ African American	3.4%	2.1%	1.7%	0.5%	0.7%
American Indian/ Alaska Native	0.4%	0.1%	0.1%	0.0%	0.3%
Asian	12.9%	11.0%	11.6%	15.3%	13.2%
Native Hawaiian/ Other Pacific Islander	0.1%	0.1%	0.0%	0.0%	0.1%
Other	N/A	N/A	N/A	N/A	N/A
Two or More Races	4.2%	2.5%	4.3%	3.6%	3.8%

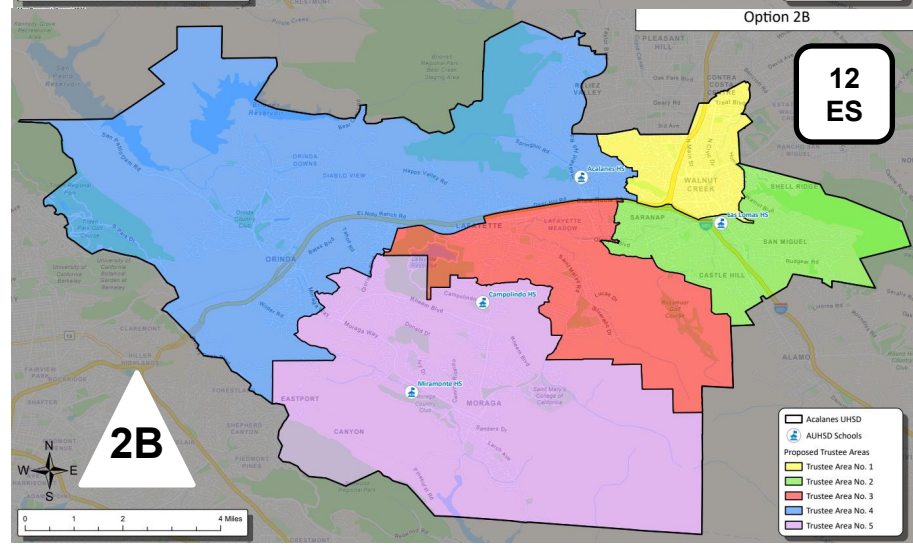
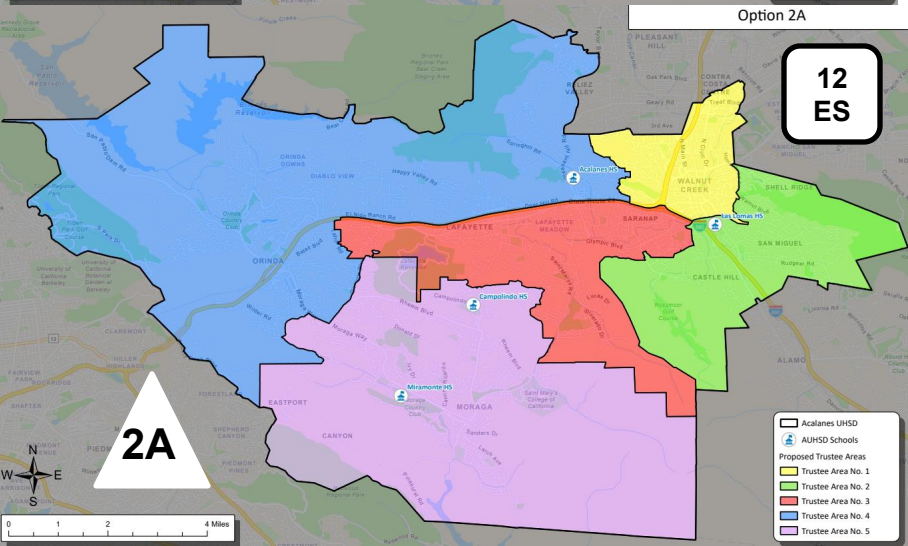
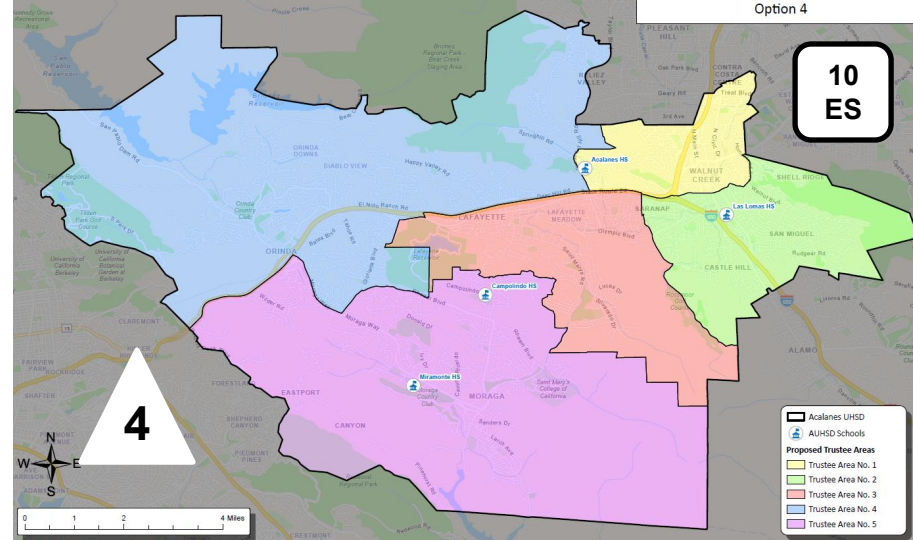
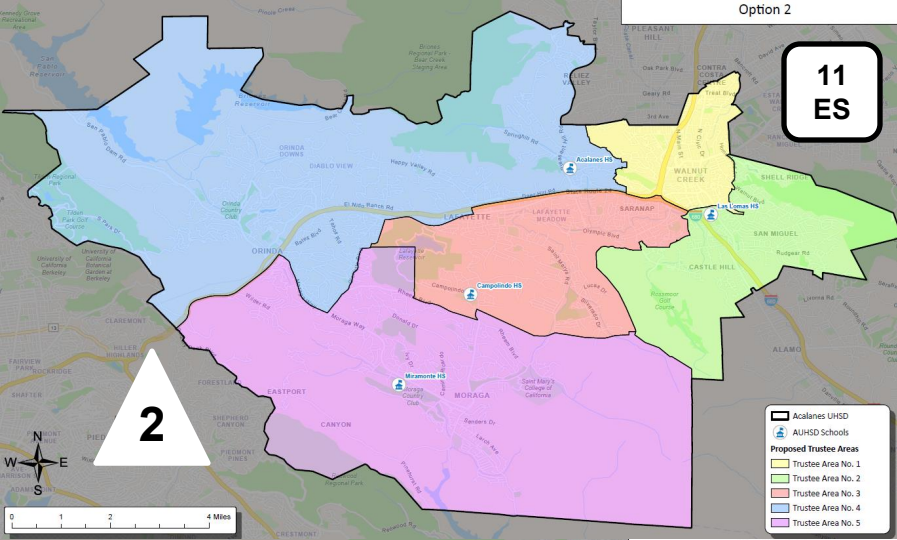
Map 5 – Income Data



Household Income (2019-2023)					
	Trustee Area 1	Trustee Area 2	Trustee Area 3	Trustee Area 4	Trustee Area 5
Income Less Than \$20K	6.6%	3.6%	5.1%	7.0%	4.0%
Income \$20K - \$50K	10.7%	11.9%	5.7%	5.9%	5.7%
Income \$50K - \$75K	7.0%	8.4%	5.3%	5.6%	5.0%
Income \$75K - \$100K	9.4%	10.8%	6.2%	4.8%	5.8%
Income \$100K - \$200K	34.9%	26.7%	24.7%	22.8%	21.9%
Income Over \$200K	31.4%	38.6%	53.0%	53.9%	57.6%







Final Thoughts



- Does not change overall District boundaries
- Does not change school attendance boundaries
- **Does not** change how the District is governed:
 - Each Board member, regardless of the trustee area in which he/she resides, still owes fiduciary duty to entire District
 - Still one District with common goals and challenges!!!

Summary of the feedback to date





BUSINESS & FACILITIES
CHARTER SCHOOLS
eMATTERS
GOVERNANCE & LEADERSHIP
HIGHER EDUCATION
LABOR & EMPLOYMENT
LITIGATION
STUDENT SERVICES & SPECIAL EDUCATION

F3Law.com

Fresno | Los Angeles | Oakland | Inland Empire | Sacramento | San Diego